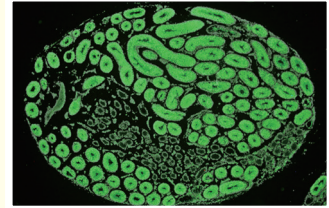


Transient suppression of transplanted spermatogonial stem cell differentiation restores fertility in mice

Nakamura, Y., Jörg, D. J., Kon, Y., Simons, B. D., and Yoshida, S. (2021). *Cell Stem Cell*, 28, 1443-1456.e7.

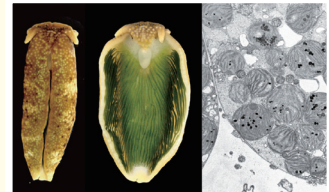
DOI: 10.1016/j.stem.2021.03.016



Chloroplast acquisition without the gene transfer in kleptoplastic sea slugs, *Plakobranthus ocellatus*

Maeda, T., Takahashi, S., Yoshida, T., Shimamura, S., Takaki, Y., Nagai, Y., Toyoda, A., Suzuki, Y., Arimoto, A., Ishii, H., Satoh, N., Nishiyama, T., Hasebe, M., Maruyama, T., Minagawa, J., Obokata, J., Shigenobu, S. (2021). *eLife* 10, e60176.

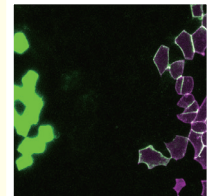
DOI: 10.7554/eLife.55108



Quantitative analyses reveal extracellular dynamics of Wnt ligands in *Xenopus* embryos

Mii, Y., Nakazato, K., Paek, C. G., Ikeda, T., Sako, Y., Mochizuki, A., Taira, M. and Takada, S. (2021). *eLife* 10, e55108.

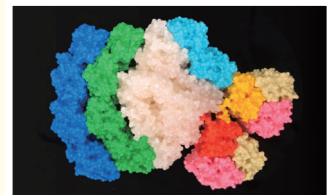
DOI: 10.7554/eLife.60176



Structural basis of LhcbM5-mediated state transitions in green algae

Pan, X., Tokutsu, R., Li, A., Takizawa, K., Song, C., Murata, K., Yamasaki, T., Liu, Z., Minagawa, J., and Li, M. (2021). *Nat. Plants* 7, 1119–1131.

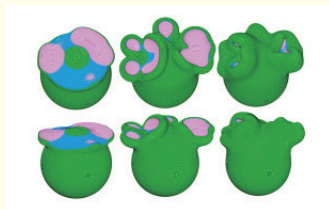
DOI: 10.1038/s41477-021-00960-8



Three-dimensional morphodynamics simulations of macropinocytic cups

Saito, N., Sawai, S. (2021). *iScience* 24, 103087.

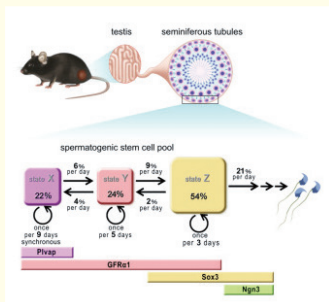
DOI: 10.1016/j.isci.2021.103087



A multistate stem cell dynamics maintains homeostasis in mouse spermatogenesis

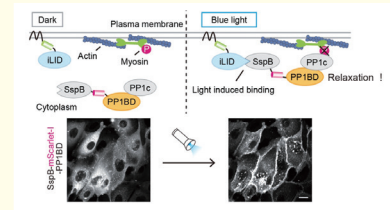
Nakagawa, T., Jörg, D. J., Watanabe, H., Mizuno, S., Han, S., Ikeda, T., Omatsu, Y., Nishimura, K., Fujita, M., Takahashi, S., Kondoh, G., Simons, B. D., Yoshida S. and Nagasawa, T. (2021). *Cell Reports* 37, 109875.

DOI: 10.1016/j.celrep.2021.109875



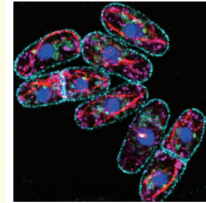
Optogenetic relaxation of actomyosin contractility uncovers mechanistic roles of cortical tension during cytokinesis

Yamamoto, K., Miura, H., Ishida, M., Mii, Y., Kinoshita, N., Takada, S., Ueno, N., Sawai, S., Kondo, Y. and Aoki, K. (2021). *Nat. Commun.* *12*, 7145.
DOI: 10.1038/s41467-021-27458-3



Near-infrared imaging in fission yeast using a genetically encoded phycoerythrin biosynthesis system

Sakai, K., Kondo, Y., Fujioka, H., Kamiya, M., Aoki, K., and Goto, Y. (2021). *J. Cell Sci.* *134*, jcs259315.
DOI: 10.1242/jcs.259315



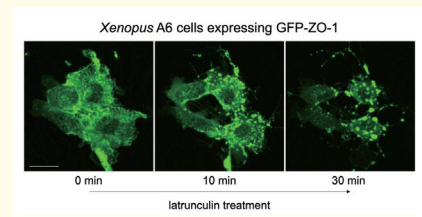
Genomic and transcriptomic analyses of the subterranean termite *Reticulitermes speratus*: gene duplication facilitates social evolution

Shigenobu, S., Hayashi, Y., Watanabe, D., Tokuda, G., Hojo, M.Y., Toga, K., Saiki, R., Yaguchi, H., Masuoka, Y., Suzuki, R., Suzuki, S., Kimura, M., Matsunami, M., Sugime, Y., Oguchi, K., Niimi, T., Gotoh, H., Hojo, M.K., Miyazaki, S., Toyoda, A., Miura, T., and Maekawa, K. (2022). *Proc. Natl. Acad. Sci. U.S.A.* *119*, e2110361119.
DOI: 10.1073/pnas.2110361119



Force-dependent remodeling of cytoplasmic ZO-1 condensates contributes to cell-cell adhesion through enhancing tight junctions

Kinoshita, N., Yamamoto, T.S., Yasue, N., Takagi, C., Fujimori, T., Ueno, N. (2022). *iScience* *25*, 103846.
DOI: 10.1016/j.isci.2022.103846



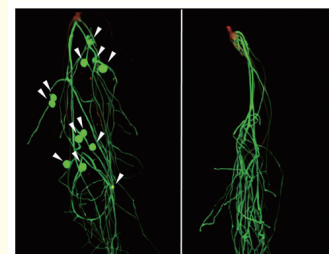
A hemimetabolous wing development suggests the wing origin from lateral tergum of a wingless ancestor

Ohde, T., Mito, T., and Niimi, T. (2022). *Nat. Commun.* *13*, 979.
DOI: 10.1038/s41467-022-28624-x



Auxin methylation by *IAMT1*, duplicated in the legume lineage, promotes root nodule development in *Lotus japonicus*

Goto, T., Soyano, T., Liu, M., Mori, T., Kawaguchi, M. (2022). *Proc. Natl. Acad. Sci. U.S.A.* *119*, e2116549119.
DOI: 10.1073/pnas.2116549119



Motion Illusion-like Patterns Extracted from Photo and Art Images Using Predictive Deep Neural Networks

Kobayashi, T., Kitaoka, A., Kosaka, M., Tanaka, K., and Watanabe, E. (2022). *Sci. Rep.* *12*, 3893.
DOI: 10.1038/s41598-022-07438-3

