

## ORGANIZATION OF THE NATIONAL INSTITUTE FOR BASIC BIOLOGY

The National Institute for Basic Biology (NIBB) was founded in 1977 as one of the Inter-University Research Institutes designated to promote and stimulate the study of biology both in Japan and internationally. NIBB conducts first-rate research on-site as well as in cooperation with national, public, and private universities and research organizations. NIBB attempts to elucidate the general and fundamental mechanisms underlying various biological phenomena throughout a wide variety of biological fields, such as cell biology, developmental biology, neurobiology, evolutionary biology, environmental biology, and theoretical biology.



NIBB Buildings in the Myodaiji area (left) and Yamate area (right).

NIBB and four other national institutes, the National Astronomical Observatory of Japan (NAOJ), the National Institute for Fusion Science (NIFS), the National Institute for Physiological Sciences (NIPS), and the Institute for Molecular Science (IMS), constitute the National Institutes of Natural Sciences (NINS), which is one of the four Inter-University Research Institute Corporations. NIBB's activities are supported by the Ministry of Education, Culture, Sports, Science and Technology (MEXT) of Japan.

### Policy, Decision Making, and Administration

The Director General oversees the operation of NIBB and is assisted by the Advisory Committee for Programming and Management. The Advisory Committee, comprised of eleven professors within NIBB and ten leading biologists

from outside of it, advises the Director General on important matters such as planning collaborative research programs as well as on the scientific activities of NIBB.

The Research Enhancement Strategy Office was founded in 2013 and aims to support researchers to improve NIBB's abilities as a collaborative research institution.

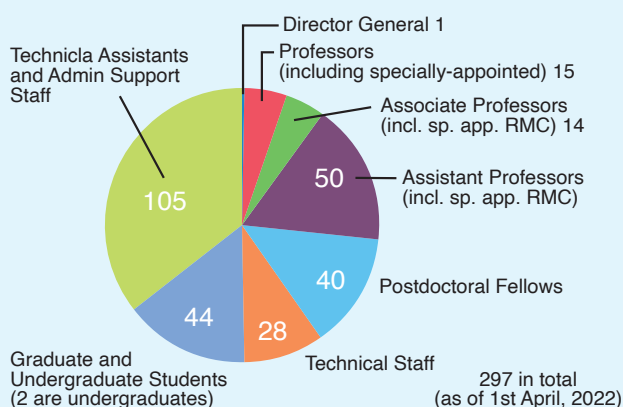
Administration of NIBB is undertaken by the Okazaki Administration Center under the direct auspices of the Administration Office of NINS.

### Research and Research Support

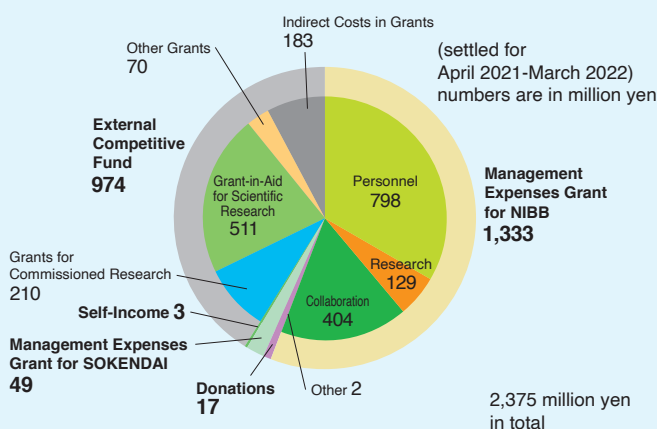
NIBB's research programs are conducted in research units called divisions and laboratories. Each research unit forms an independent project team. The NIBB Core Research Facilities and NIBB BioResource Center were launched in 2010 to support research at NIBB and also to act as an intellectual hub to promote collaboration among the researchers of NIBB and other institutions. The NIBB Center of the Inter-University Bio-Backup Project (IBBP Center) was founded in 2012 to prevent the loss of invaluable biological resources. The Center for the Development of New Model Organisms was founded in 2013 to promote the development of new model organisms and research that uses them. The Technical Division manages the activities of the technical staff and helps to promote the activities of each research unit and research support facility to maintain the common resources of NIBB and NINS.

The Astrobiology Center (ABC) was established in 2015 as a NINS research center. Additionally, the Exploratory Research Center on Life and Living Systems (ExCELLS) was founded in 2018. Several NIBB researchers are also affiliated with ABC and ExCELLS.

### Members in NIBB

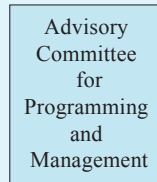
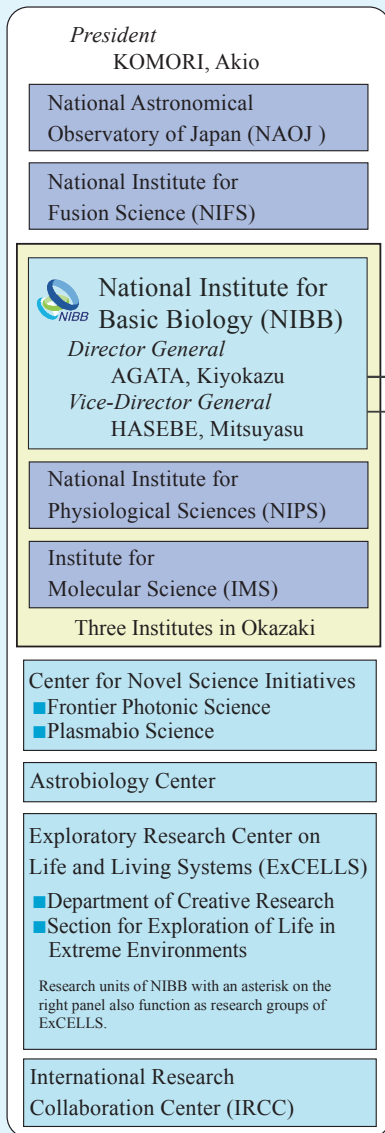


### Financial Configuration of NIBB

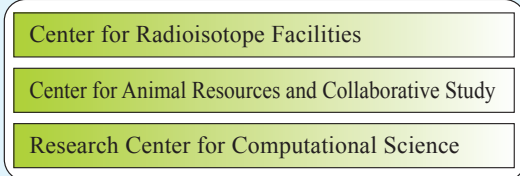


## ■ Organization

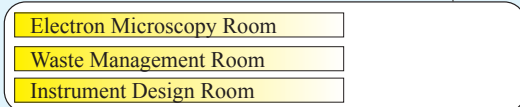
### National Institute of Natural Sciences (NINS)



#### Okazaki Research Facilities

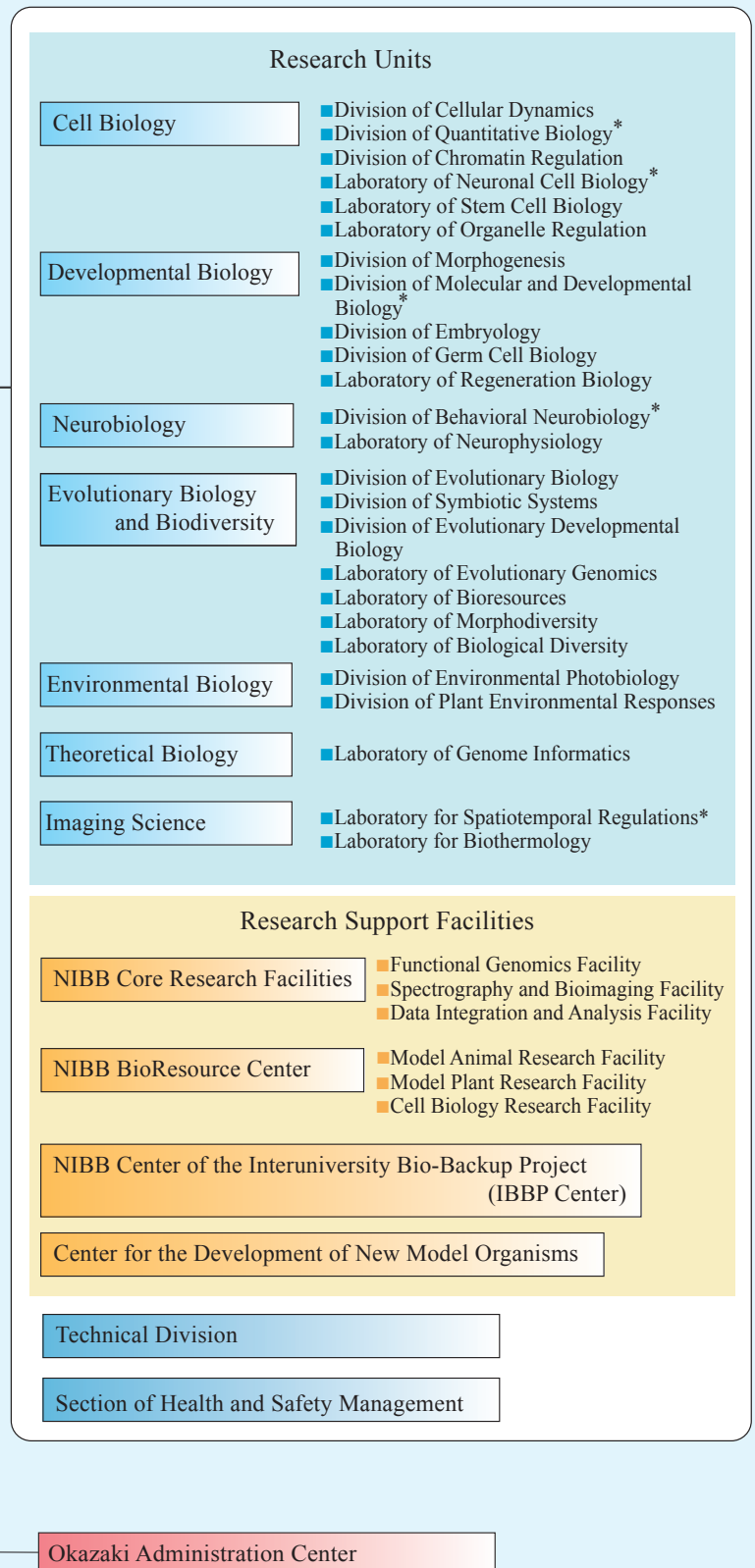


#### Research Facilities run jointly by NIBB and NIPS



### National Institute for Basic Biology (NIBB)

As of March 31, 2021



■ **Members of the Advisory Committee for Programming and Management** (terms of April 2021 to March 2023)

<b>External committee</b>	KITANO, Jun	Professor, National Institute of Genetics
	KYOZUKA, Junko	Professor, Tohoku University
	KUROIWA, Asato	Professor, Hokkaido University
	SATAKE, Akiko	Professor, Kyushu University
	SIOMI, Mikiko C.	Professor, Tokyo University
	NIWA, Hitoshi	Professor, Kumamoto University
	HANASHIMA, Carina	Associate Professor, Waseda University
	HIGASHIYAMA, Tetsuya	Professor, Tokyo University
	FUKUI, Manabu ##	Professor, Hokkaido University
	YOSHIMURA, Takashi	Professor, Nagoya University
<b>Internal committee</b>	UEDA, Takashi	Professor, National Institute for Basic Biology
	MORITA, Miyo T.	Professor, National Institute for Basic Biology
	KAWAGUCHI, Masayoshi	Professor, National Institute for Basic Biology
	TAKADA, Shinji	Professor, National Institute for Basic Biology
	NIIMI, Teruyuki	Professor, National Institute for Basic Biology
	HASEBE, Mitsuyasu	Professor, National Institute for Basic Biology
	HIGASHIJIMA, Shin-ichi	Professor, National Institute for Basic Biology
	FUJIMORI, Toshihiko	Professor, National Institute for Basic Biology
	MINAGAWA, Jun #	Professor, National Institute for Basic Biology
	YOSHIDA, Shosei	Professor, National Institute for Basic Biology

# Chairperson

## Vice-Chair