

Genomic profiling by ALaP-Seq reveals transcriptional regulation by PML bodies through DNMT3A exclusion

Kurihara, M., Kato, K., Sanbo, C., Shigenobu, S., Ohkawa, Y., Fuchigami, T., and Miyanari, Y. (2020). *Molecular Cell* 78.
DOI:10.1016/j.molcel.2020.04.004



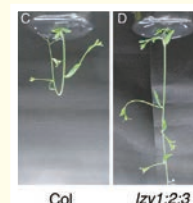
Genomes of the venus flytrap and close relatives unveil the roots of plant carnivory

Palfalvi, G., Hackl, T., Terhoeven, N., Shibata, T.F., Nishiyama, T., Ankenbrand, M., Becker, D., Förster, F., Freund, M., Iosip, A., Kreuzer, I., Saul, F., Kamida, C., Fukushima, K., Shigenobu, S., Tamada, Y., Adamec, L., Hoshi, Y., Ueda, K., Winkelmann, T., Fuchs, J., Schubert, I., Schwacke, R., Al-Rasheid, K., Schultz, J., Hasebe, M., Hedrich, R. (2020). *Current Biology* 30.
DOI:10.1016/j.cub.2020.04.051



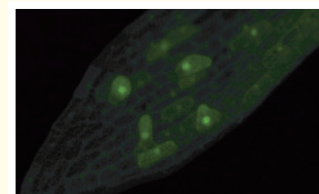
Gravity-sensing tissues for gravitropism are required for “anti-gravitropic” phenotypes of *Lzy* multiple mutants in *Arabidopsis*

Kawamoto, N., Kanbe, Y., Nakamura, M., Mori, A., and Morita, M.T. (2020). *Plants* 9.
DOI:10.3390/plants9050615



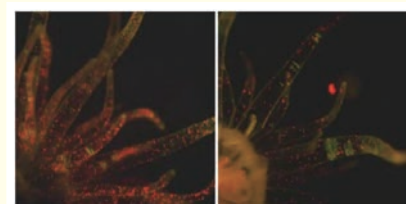
DNA damage triggers reprogramming of differentiated cells into stem cells in *Physcomitrella*

Gu, N., Tamada, Y., Imai, A., Palfalvi, G., Kabeya, Y., Shigenobu, S., Ishikawa, M., Angelis, K.J., Chen, C., and Hasebe, M. (2020). *Nature Plants* 6.
DOI:10.1038/s41477-020-0745-9



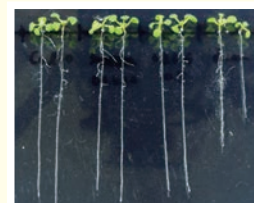
Loss of symbiont infectivity following thermal stress can be a factor limiting recovery from bleaching in cnidarians

Kishimoto, M., Baird, A.H., Maruyama, S., Minagawa, J., and Takahashi, S. (2020). *ISME Journal* 14.
DOI:10.1038/s41396-020-00742-8



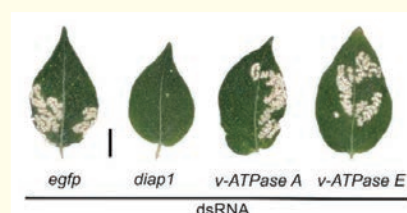
Longin R-SNARE is retrieved from the plasma membrane by ANTH domain-containing proteins in *Arabidopsis*

Fujimoto, M., Ebine, K., Nishimura, K., Tsutsumi, N., and Ueda, T. (2020). *Proceedings of the National Academy of Sciences of the United States of America* 117.
DOI:10.1073/pnas.2011152117



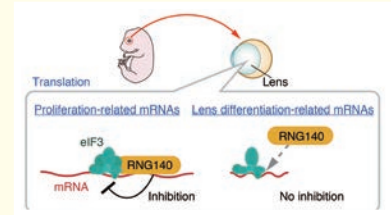
Oral RNAi of *diap1* results in rapid reduction of damage to potatoes in *Henosepilachna vigintioctopunctata*

Chikami, Y., Kawaguchi, H., Suzuki, T., Yoshioka, H., Sato, Y., Yaginuma, T., and Niimi, T. (2021). *Journal of Pest Science* 94.
DOI:10.1007/s10340-020-01276-w



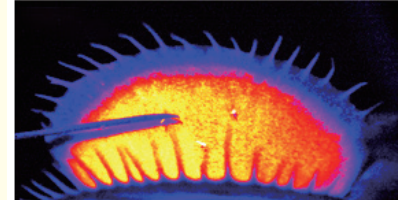
Implications of RNG140 (caprin2)-mediated translational regulation in eye lens differentiation

Nakazawa, K., Shichino, Y., Iwasaki, S., and Shiina, N. (2020). *Journal of Biological Chemistry* 295. DOI:10.1074/jbc.RA120.012715



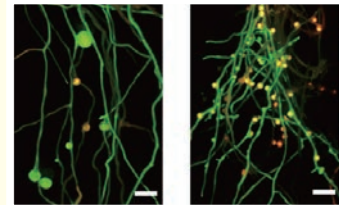
Calcium dynamics during trap closure visualized in transgenic Venus flytrap

Suda, H., Mano, H., Toyota, M., Fukushima, K., Mimura, T., Tsutsui, I., Hedrich, R., Tamada, Y., and Hasebe, M. (2020). *Nature Plants* 6. DOI:10.1038/s41477-020-00773-1



MIR2111-5 locus and shoot-accumulated mature miR2111 systemically enhance nodulation depending on HAR1 in Lotus japonicus

Okuma, N., Soyano, T., Suzuki, T., and Kawaguchi, M. (2020). *Nature Communications* 11. DOI:10.1038/s41467-020-19037-9



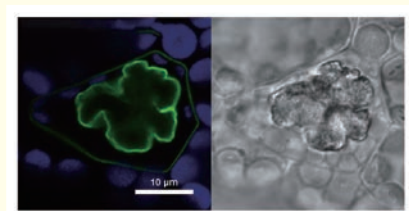
A step-down photophobic response in coral larvae: implications for the light-dependent distribution of the common reef coral, Acropora tenuis

Sakai, Y., Kato, K., Koyama, H., Kuba, A., Takahashi, H., Fujimori, T., Hatta, M., Negri, A.P., Baird, A.H., and Ueno, N. (2020). *Scientific Reports* 10. DOI:10.1038/s41598-020-74649-x



The liverwort oil body is formed by redirection of the secretory pathway

Kanazawa, T., Morinaka, H., Ebine, K., Shimada, T.L., Ishida, S., Minamino, N., Yamaguchi, K., Shigenobu, S., Kohchi, T., Nakano, A., et al. (2020). *Nature Communications* 11. DOI:10.1038/s41467-020-19978-1



Intercellular and intracellular cilia orientation is coordinated by CELSR1 and CAMSAP3 in oviduct multi-ciliated cells

Usami, F.M., Arata, M., Shi, D., Oka, S., Higuchi, Y., Tissir, F., Takeichi, M., and Fujimori, T. (2021). *Journal of Cell Science* 134. DOI:10.1242/jcs.257006

