

CENTER FOR RADIOISOTOPE FACILITIES



Head
HASEBE, Mitsuyasu



Associate Professor
KODAMA, Ryuji

Technical Staff:

MATSUDA, Yoshimi
(Radiation Protection Supervisor, Myodaiji area)
SAWADA, Kaoru
(Radiation Protection Supervisor, Yamate area)
IINUMA, Hideko
HAYASHI, Tomoko

Technical Assistant:



The Center for Radioisotope Facilities (CRF) provides a well-established and comfortable environment for natural science researchers across Japan as part of the Inter-University Research Institute Corporation. Center staff maintain controlled areas in compliance with relevant laws (Table 1) and monitor the purchase and transfer of radioisotopes. This year, the staff also worked to close down the CRF Yamate branch (Figure 1, Tables 2-4).

With the emergence of non-radioisotope alternative technologies, the number of CRF users has gradually declined over the past 20 years (Figure 1). To improve efficiency, the director general of the NIBB proposed concentrating the CRF to the Myodaiji branch and closing the Yamate branch. This possibility was discussed by the CRF Steering Committee; it was decided during the Directors' Meeting of the three Okazaki Institutes (NIBB, NIPS, and IMS) in September 2020 that the Yamate branch would be closed and the CRF would be consolidated to the Myodaiji branch. The CRF center staff confirmed that there was no contamination at the Yamate branch and transferred radioisotopes to the Myodaiji branch for further use or to the Japan Radioisotope Association for proper disposal. In March 2021, the Yamate branch was successfully decommissioned, and the CRF was centralized to the Myodaiji branch (Figure 2).

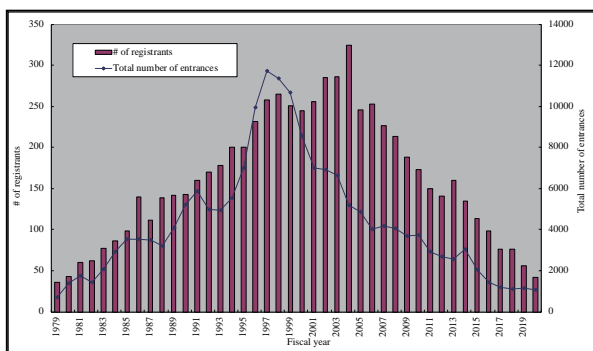


Figure 1. Annual number of registrants and total number of entrances to the CRF

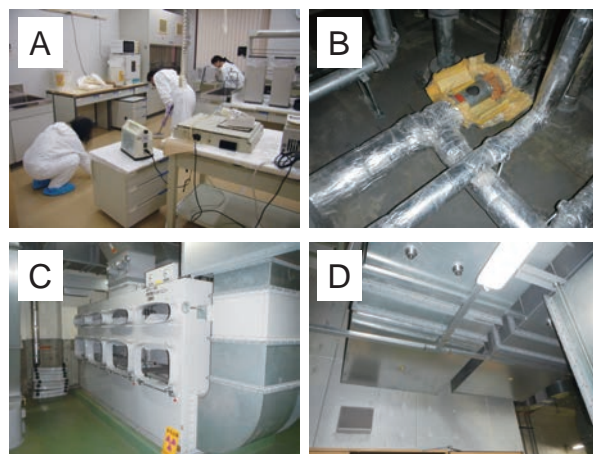


Figure 2. Absence of radiation contamination at the Yamate branch. Inspection of the floor (A), drainage pipes (B), filter units (C), and exhaust ducts (D).

Table 1. Training courses offered for radiation workers during fiscal year 2020.

Training course	Branch	# of participants
Introductory course for beginners	Myodaiji	5
Introductory course for experts	Myodaiji	1
User training course	Myodaiji	28
User training course	Yamate	9

Table 2. Number of registrants and users of the CRF during fiscal year 2020.

	Myodaiji-branch	Yamate-branch
# of registrants	33	9
# of users	14	6

Table 3. Total number of uses by individual users and visitors during fiscal year 2020.

	Myodaiji branch	Yamate branch
# of users	631	265
# of visitors	119	44

Table 4. Radioisotopes received and used (in kBq) at each branch during fiscal year 2020.

		Myodaiji branch	Yamate branch	Total
¹²⁵ I	Received	0	0	0
¹²⁵ I	Used	0	0	0
³⁵ S	Received	0	0	0
³⁵ S	Used	0	0	0
³² P	Received	37,000	12,950	49,950
³² P	Used	22,274	12,950	35,224
¹⁴ C	Received	3,913	0	3,913
¹⁴ C	Used	15	0	15
³ H	Received	612,350	0	612,350
³ H	Used	0	0	0