

The National Institute for Basic Biology (NIBB) was founded in 1977 on a hill overlooking the old town of Okazaki in Aichi prefecture as one of the Inter-University Research Institutes designated to promote and stimulate the study of biology both in Japan and internationally. NIBB conducts first-rate research on site as well as in cooperation with national, public and private universities and research organizations. NIBB attempts to elucidate the general and fundamental mechanisms underlying various biological phenomena throughout a wide variety of biological fields, such as cell, developmental, evolutionary, environmental and theoretical biology as well as neurobiology.

NIBB and four other national institutes, the National Astronomical Observatory of Japan (NAOJ), the National Institute for Fusion Science (NIFS), the National Institute for Physiological Sciences (NIPS), and the Institute for Molecular Science (IMS), constitute the National Institutes of Natural Sciences (NINS), which is one of the four Inter-University Research Institute Corporations. NIBB's activities are supported by the Ministry of Education, Culture, Sports, Science and Technology (MEXT) of Japan.



Buildings in the Myodaiji area (left) and Yamate area (right).

## Policy, Decision Making, and Administration

The Director General oversees the operation of NIBB, assisted by the Advisory Committee for Programming and Management. The Advisory Committee, comprised of eleven professors within NIBB and ten leading biologists from outside of it, advises the Director General on important matters such as planning joint research programs as well as on the scientific activities of NIBB. The Advisory Committee makes recommendations on the appointments of new Directors General, faculty appointments, NIBB's annual budget and future prospects.

The Research Enhancement Strategy Office, aimed at supporting researchers in order to improve NIBB's abilities as a collaborative research institution, was founded in 2013. The Office is made up of seven groups (p. 96) and its activities are mainly carried out by URAs (University Research Administrators) in close collaboration with the NINS's Research Enhancement Promotion Headquarters.

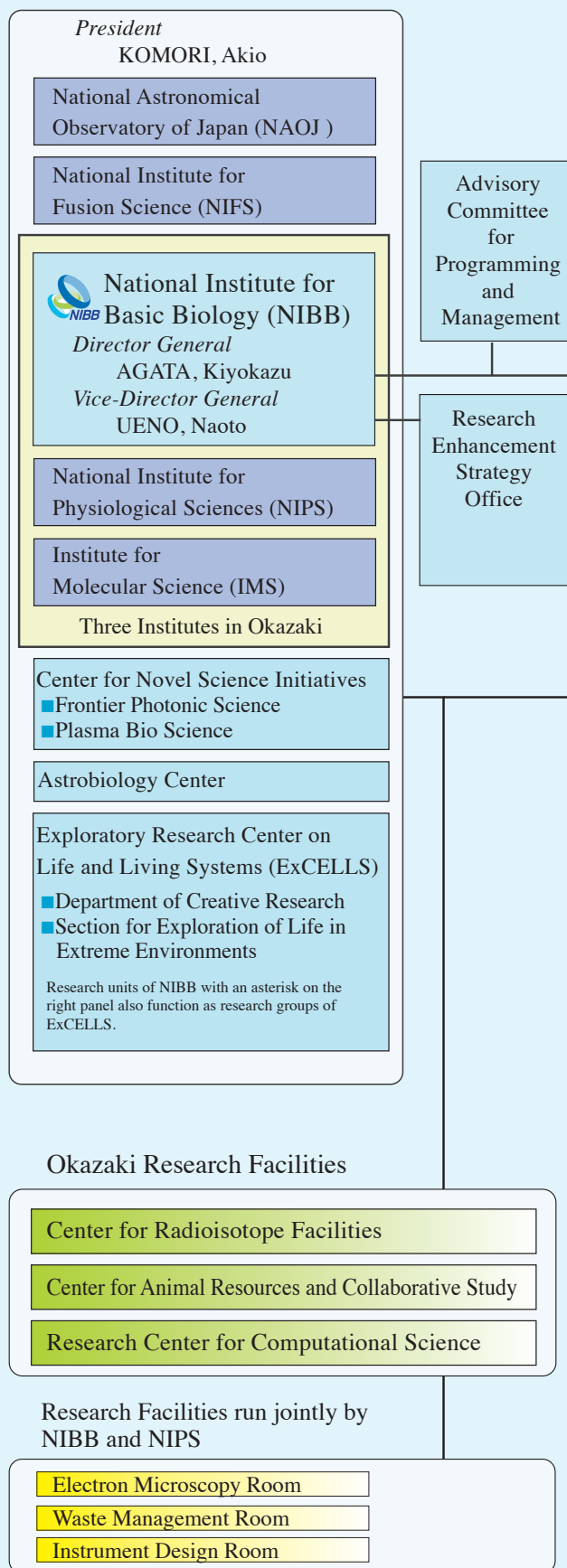
Administration of NIBB is undertaken by the Okazaki Administration Office under the direct auspices of the Administration Office of NINS.

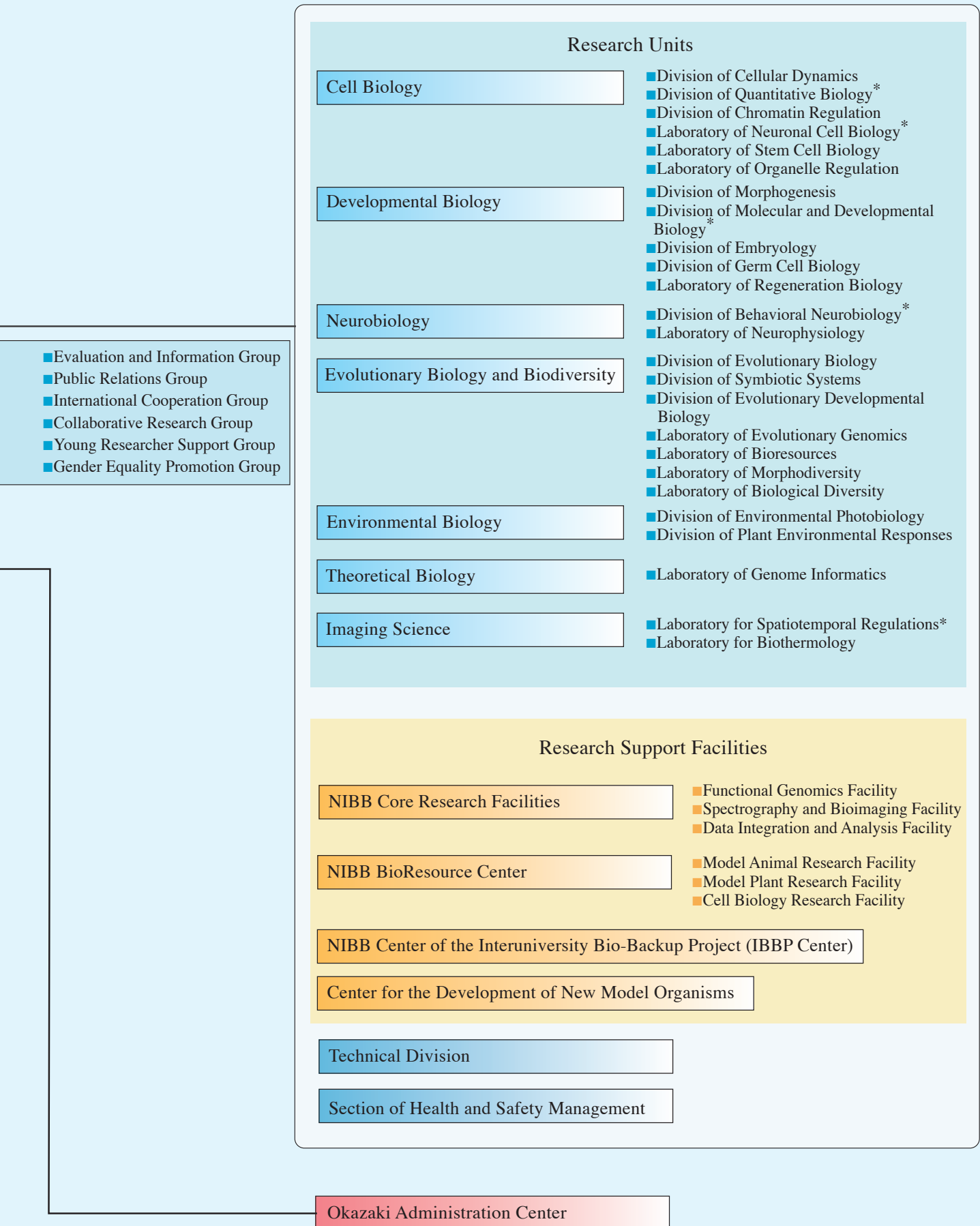
## Research and Research Support

NIBB's research programs are conducted in research units and research support units. Each research unit is called either a division, led by a professor, or a laboratory, led by an associate professor or an assistant professor. Each research unit forms an independent project team. The NIBB Core

## Organization

### National Institutes of Natural Sciences (NINS)

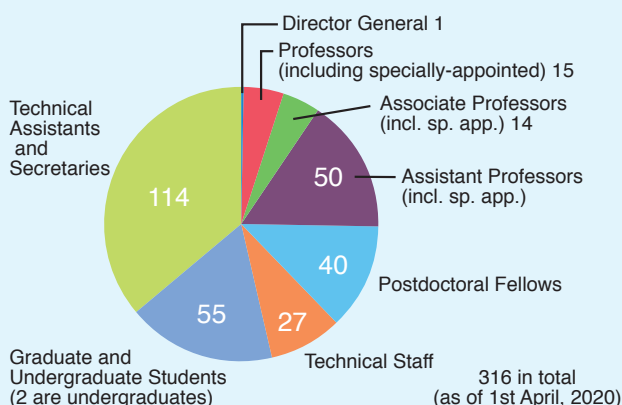




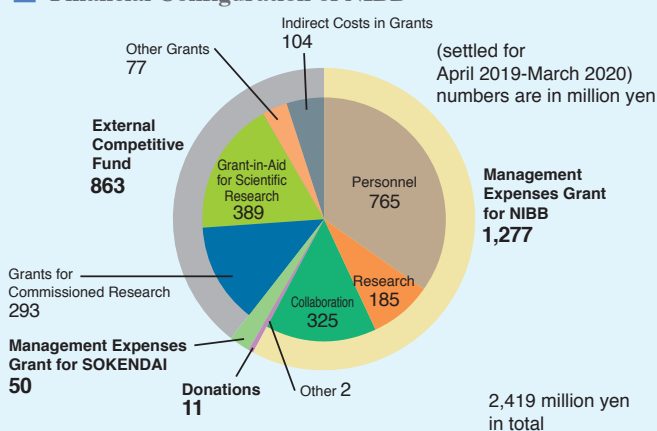
Research Facilities and NIBB BioResource Center were launched in 2010 to support research in NIBB and also to act as an intellectual hub to promote collaboration among the researchers of NIBB and other institutions. The NIBB Center of the Inter-University Bio-Backup Project (IBBP Center) was founded in 2012 to prevent the loss of invaluable biological resources. Projects for the development of bioresource preservation technology are solicited by the IBBP center. The Center for the Development of New Model Organisms was founded in 2013 to promote development of new model organisms and research using them. The Technical Division manages the activities of the technical staff and helps to promote the activities of each research unit and to maintain the common resources of both the research support units of NIBB and the research facilities of the Okazaki campus. The Center for Radioisotope Facilities are one of the latter and run by the technical staff of NIBB.

The Exploratory Research Center on Life and Living Systems (ExCELLS) was founded in 2018 to develop novel approaches for observing biological entities, deciphering hidden information, and creating living systems to improve our understanding of their nature. Moreover, ExCELLS promotes collaborative, interdisciplinary research involving investigators exploring organisms living in extreme environments.

#### Members in NIBB



#### Financial Configuration of NIBB



#### Members of the Advisory Committee for Programming and Management (terms of April 2019 to March 2021)

Category	Name	Affiliation	
Non-NIBB members	HANASHIMA, Carina	Professor, Waseda University	
	HIRAOKA, Yasushi ##	Professor, Osaka University	
	KITANO, Jun	Professor, National Institute of Genetics	
	KOHCHI, Takayuki	Professor, Kyoto University	
	KUROIWA, Asato	Professor, Hokkaido University	
	SATAKE, Akiko	Professor, Kyushu University	
	SIOMI, Mikiko	Professor, The University of Tokyo	
	SUGIMOTO, Asako	Professor, Tohoku University	
	YAMAMOTO, Takashi	Professor, Hiroshima University	
	YOSHIMURA, Takashi	Professor, Nagoya University	
	NIBB members	AOKI, Kazuhiro	Professor, ExCELLS and National Institute for Basic Biology
		FUJIMORI, Toshihiko	Professor, National Institute for Basic Biology
		HASEBE, Mitsuyasu	Professor, National Institute for Basic Biology
HIGASHIJIMA, Shin-ichi		Professor, ExCELLS and National Institute for Basic Biology	
KAWAGUCHI, Masayoshi #		Professor, National Institute for Basic Biology	
MINAGAWA, Jun		Professor, National Institute for Basic Biology	
NIIMI, Teruyuki		Professor, National Institute for Basic Biology	
TAKADA, Shinji		Professor, ExCELLS and National Institute for Basic Biology	
UEDA, Takashi		Professor, National Institute for Basic Biology	
UENO, Naoto		Professor, National Institute for Basic Biology	
YOSHIDA, Shosei	Professor, National Institute for Basic Biology		

# Chairperson  
## Vice-Chair