

## CENTER FOR RADIOISOTOPE FACILITIES



Head  
HASEBE, Mitsuyasu



Associate Professor  
KODAMA, Ryuji

*Technical Staff:*

*MATSUDA, Yoshimi*  
(Radiation Protection Supervisor)  
*SAWADA, Kaoru*  
(Radiation Protection Supervisor)

*Technical Assistant:*

*IINUMA, Hideko*  
*HAYASHI, Tomoko*

The technical and supporting staff of the Center for Radioisotope Facilities (CRF) maintain controlled areas in compliance with the law. The CRF is responsible for monitoring the purchase of radioisotopes from the Japan Radioisotope Association (JRIA) and the transfer of radioisotope wastes to JRIA.

Ms. Matsuda, Ms. Inuma and Ms. Hayashi maintained the Myodaiji area. Ms. Sawada worked in the Yamate area. Dr. Kodama worked in both areas.

The following are the CRF's notable activities in 2016.

1. The facility's emergency manual was updated. Main points of modification are the following.

- 1) When the fire alarm goes off.
- 2) When the warning declaration about an earthquake disaster is issued.

The emergency manual file is placed in the contamination check room.

2. The cameras of the video recording system at the Yamate area were superannuated, and were exchanged in February 2016. (Figure 1A)

3. The pumps of the radioisotope waste water treatment facility at the Myodaiji area could not start draining when the water level was low. By adding an electric valve and exchanging flap valves in February 2016, the pumps operate normally. (Figure 1B)

4. As the number of users decreases, the ventilating installations, the air conditioners, and the low temperature rooms are deactivated when there are no users. The ice makers were deactivated after June 2016.

The number of registrants and the number of users from January 2016 to December 2016 are shown in Table 1.

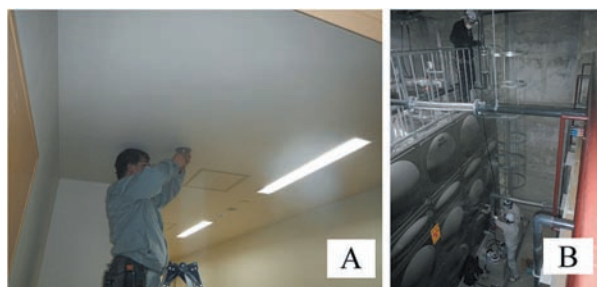


Figure 1. The CRF's notable activities in 2016.  
A: exchanging of the video camera at the Yamate area  
B: adding the electric valve at the Myodaiji area

Users and visitors counted by the access control system of the controlled areas numbered 1,531 during this period. The numbers for each area are shown in Table 2. The annual changes of registrants and the number of totals per fiscal year are shown in Figure 2. The balance of radioisotopes received and used at the CRF is shown in Table 3. The training courses on radioisotope handling were given as in Table 4.

|             | Myodaiji Area | Yamate Area |
|-------------|---------------|-------------|
| Registrants | 55            | 54          |
| Users       | 27            | 23          |

Table 1. Numbers of registrants and users at Myodaiji area and Yamate area in 2016.

|          | Myodaiji Area | Yamate Area | Total |
|----------|---------------|-------------|-------|
| Users    | 851           | 430         | 1,281 |
| Visitors | 132           | 118         | 250   |
| Total    | 983           | 548         | 1,531 |

Table 2. Users and visitors who entered each controlled area in 2016.

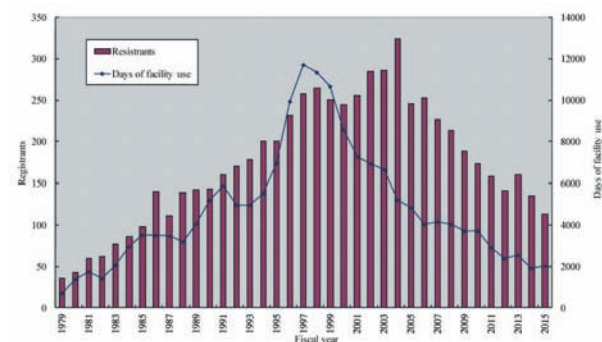


Figure 2. Annual changes of registrants and days of facility use per fiscal year.

|                           | Myodaiji Area | Yamate Area | Total   |
|---------------------------|---------------|-------------|---------|
| <sup>125</sup> I Received | 0             | 3,866       | 3,866   |
| <sup>125</sup> I Used     | 0             | 1,072       | 1,072   |
| <sup>35</sup> S Received  | 0             | 0           | 0       |
| <sup>35</sup> S Used      | 0             | 0           | 0       |
| <sup>32</sup> P Received  | 249,750       | 0           | 249,750 |
| <sup>32</sup> P Used      | 193,051       | 0           | 193,051 |
| <sup>14</sup> C Received  | 37,000        | 0           | 37,000  |
| <sup>14</sup> C Used      | 6,000         | 0           | 6,000   |
| <sup>3</sup> H Received   | 0             | 925,000     | 925,000 |
| <sup>3</sup> H Used       | 0             | 1,110       | 1,110   |

Table 3. Balance of radioisotopes received and used (kBq) at each controlled area in 2016.

| training course                   | place    | numbers of participant |
|-----------------------------------|----------|------------------------|
| Introductory course for beginners | Myodaiji | 1                      |
| Introductory course for beginners | Yamate   | 1                      |
| Introductory course for experts   | Myodaiji | 3                      |
| Introductory course for experts   | Yamate   | 2                      |
| Users training course*            | Myodaiji | 48                     |
| Users training course             | Yamate   | 43                     |

\*including English course

Table 4. Training courses for radiation workers in 2016.