

CENTER FOR RADIOISOTOPE FACILITIES



Head
HASEBE, Mitsuyasu



Associate Professor
KODAMA, Ryuji

Technical Staff: MATSUDA, Yoshimi
(Radiation Protection Supervisor)
SAWADA, Kaoru
(Radiation Protection Supervisor)
IINUMA, Hideko
Technical Assistant: KAMIYA, Kiyomi

The technical and supporting staff of the Center for Radioisotope Facilities (CRF) maintain controlled areas in compliance with the law. The CRF is responsible for monitoring the purchase of radioisotopes from the Japan Radioisotope Association (JRIA) and the transfer of radioisotope wastes to JRIA.

Ms. Matsuda, Ms. Inuma, and Ms. Kamiya maintained the Myodaiji area. Ms. Sawada worked in the Yamate area. Dr. Kodama worked in both areas.

The following are the CRF's notable activities in 2015.

1. An introductory course for radioisotope handling was held after an interval of 6 years due to the repair work of the Common Facilities building I. The content of the course was renewed, allowing participants to experience handling of several types of radiation and radioisotopes (Figure 1A).
2. The drain storage tanks at the Yamate area were cleaned and checked by the maintenance workers after 4 years of use. Both the water level indicator and the water level alarm were exchanged. (Figure 1B)

The number of registrants and the number of users from January 2015 to December 2015 are shown in Table 1.

Users and visitors counted by the access control system of the controlled areas numbered 2,250 during this period. The numbers for each area are shown in Table 2. The annual changes of registrants and the number of totals per fiscal year are shown in Figure 2. The balance of radioisotopes received and used at the CRF is shown in Table 3. The training courses on radioisotope handling were given as in Table 4.



Figure 1. The CRF's notable activities in 2015.
A: The introductory course for radioisotope handling
B: Cleaning of the drain storage tanks at the Yamate area

	Myodaiji area	Yamate area
Registrants	62	78
Users	29	37

Table 1. Numbers of registrants and users at Myodaiji area and Yamate area in 2015.

	Myodaiji area	Yamate area	Total
Users	1,281	665	1,946
Visitors	185	119	304
Total	1,466	784	2,250

Table 2. Users and visitors who entered each controlled area in 2015.

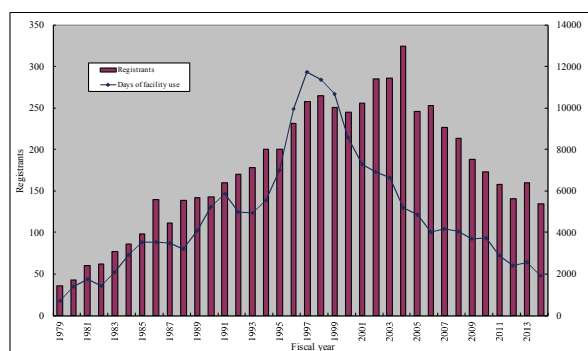


Figure 2. Annual changes of registrants and days of facility use per fiscal year.

	Myodaiji area	Yamate area	Total
¹²⁵ I Received	0	590	590
¹²⁵ I Used	0	165	165
³⁵ S Received	74,000	1,110,000	1,184,000
³⁵ S Used	14,706	1,343,661	1,358,367
³² P Received	216,450	0	216,450
³² P Used	200,540	0	200,540
¹⁴ C Received	37,000	0	37,000
¹⁴ C Used	18,630	0	18,630
³ H Received	40,700	3,718,500	3,759,200
³ H Used	28,075	3,715,540	3,743,615

Table 3. Balance of radioisotopes received and used (kBq) at each controlled area in 2015.

Training course	Place	Number of participants
Introductory course for beginners*	Myodaiji	1
Introductory course for beginners*	Yamate	3
Introductory course for experts	Myodaiji	4
Introductory course for experts	Yamate	6
Users training course*	Myodaiji	53
Users training course	Yamate	69

*including English course

Table 4. Training courses for radiation workers in 2015.