

ORGANIZATION OF THE NATIONAL INSTITUTE FOR BASIC BIOLOGY

The National Institute for Basic Biology (NIBB) was founded in 1977 on a hill overlooking the old town of Okazaki in Aichi prefecture as one of the Inter-University Research Institutes to promote and stimulate studies of biology. NIBB conducts first-rate research on site as well as in cooperation with national, public and private universities and research organizations. NIBB attempts to elucidate the general and fundamental mechanisms underlying various biological phenomena throughout a wide variety of biological fields, such as cell biology, developmental biology, neurobiology, evolutionary biology, environmental biology, and theoretical biology.

NIBB and four other national institutes, the National Astronomical Observatory (NAO), the National Institute for Fusion Science (NIFS), the National Institute for Physiological Sciences (NIPS), and the Institute for Molecular Science (IMS), constitute the National Institutes of Natural Sciences (NINS), which is one of the four Inter-University Research Institute Corporations. NIBB's activities are supported by the Ministry of Education, Culture, Sports, Science and Technology (MEXT) of Japan. The Okazaki Institute for Integrative Bioscience was established as a common facility for the three institutes (NIBB, NIPS, and IMS) of the Okazaki campus.



Buildings in the Myodaiji area (left) and Yamate area (right).

Policy, Decision Making, and Administration

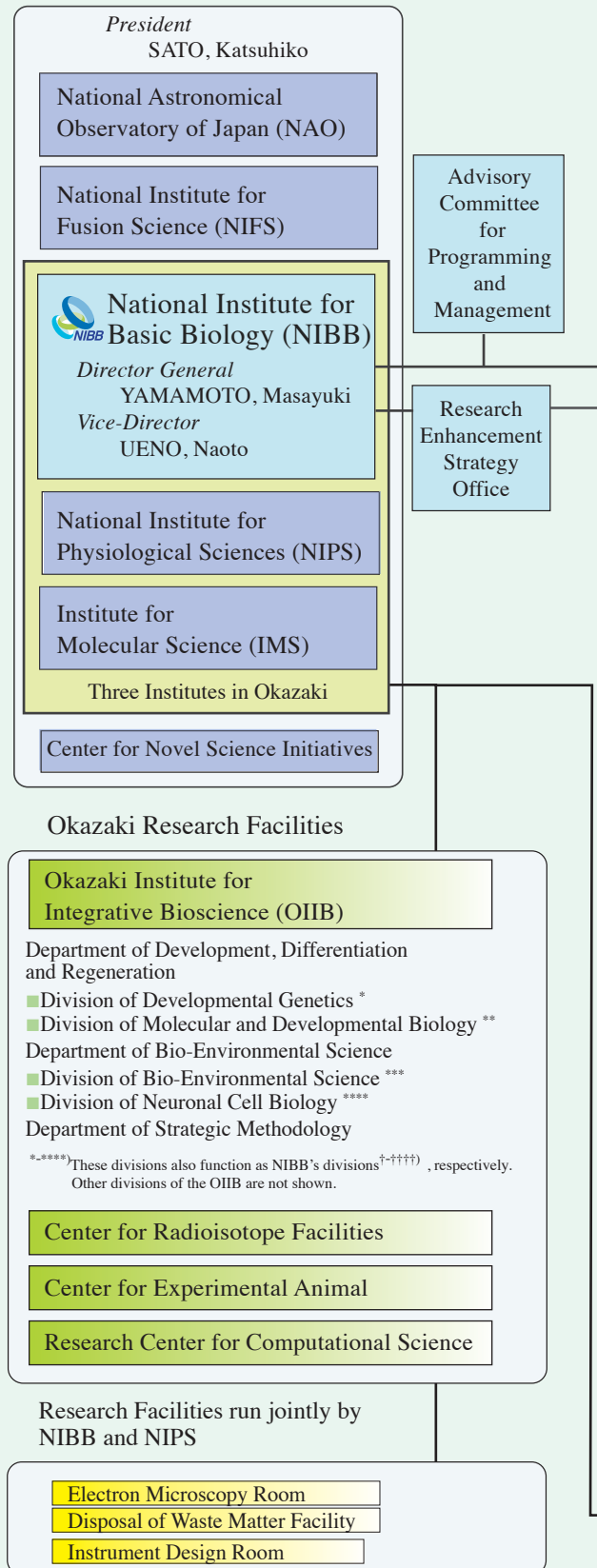
The Director General oversees the operation of NIBB, assisted by the Advisory Committee for Programming and Management. The Advisory Committee, comprised of eleven professors within NIBB and ten leading biologists outside NIBB, advises the Director General on important matters such as planning joint research programs as well as on the scientific activities of NIBB. The Advisory Committee makes recommendations on the appointments of new Directors General, faculty appointments, NIBB's annual budget and future prospects.

The Research Enhancement Strategy Office, aimed at supporting researchers in order to improve NIBB's abilities as a collaborative research institution, was restructured in 2013 from the former Strategic Planning Department, Office of Public Relations, and Office of International Cooperation. The Office is made up of five groups (p. 83) and its activities are mainly carried out by URAs (University Research Administrators) in close collaboration with the NINS's Research Enhancement Promotion Headquarters.

Administration of NIBB is undertaken by the Okazaki Administration Office under the direct auspices of the Administration Office of NINS.

Organization

National Institutes of Natural Sciences (NINS)



- Evaluation and Information Group
- Public Relations Group
- International Cooperation Group
- Collaborative Research Group
- Gender Equality Promotion Group



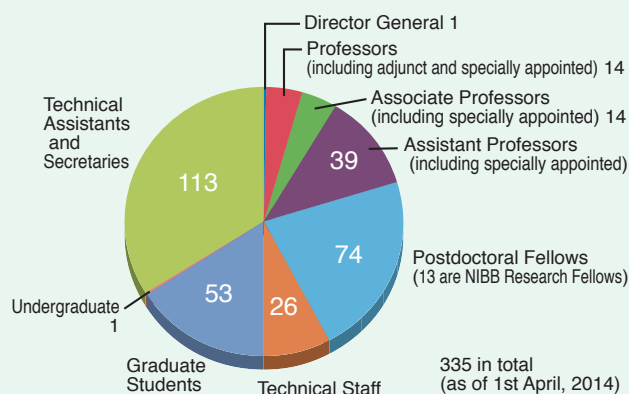
Okazaki Administration Office

Research and Research Support

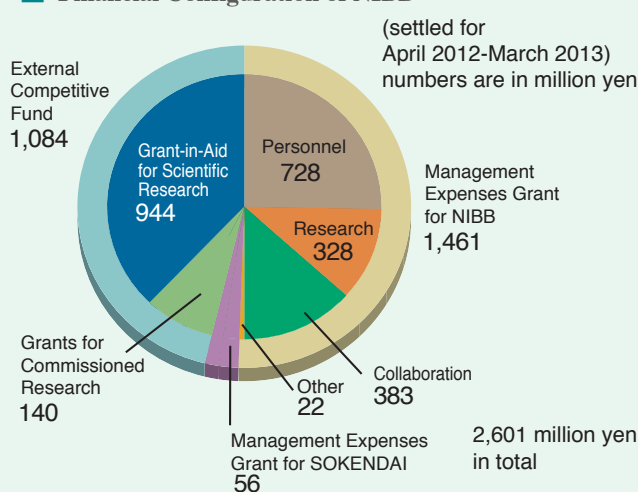
NIBB's research programs are conducted in research units and research support units. Each research unit is called either a division, led by a professor, or a laboratory, led by an associate professor or an assistant professor. Each research unit forms an independent project team. The NIBB Core Research Facilities and NIBB BioResource Center were launched in 2010 to support research in NIBB and also to act as an intellectual hub to promote collaboration among the researchers of NIBB and other institutions. The NIBB Center of the Inter-University Bio-Backup Project (IBBP Center) was founded in 2012 to prevent loss of invaluable biological resources. Projects for the development of bioresource preservation technology are solicited by the IBBP center from 2013. The NIBB Center for Model Organism Development was founded in 2013 to promote development of new model organisms and research using them. The Technical Division manages the activities of the technical staff and helps to promote the activities of each research unit and to maintain the common resources of both the research support units of NIBB and the research facilities of the Okazaki campus. Center for Radioisotope Facilities are one of the latter and ran by the technical staff of NIBB.

The Okazaki Institute for Integrative Bioscience was founded to conduct interdisciplinary molecular research on various biological phenomena and is shared by all three institutes in Okazaki. Some of the divisions also function as NIBB divisions.

Members in NIBB



Financial Configuration of NIBB



Members of the Advisory Committee for Programming and Management (as of June, 2014)

Non-NIBB members	Name	Position
	HAKOSHIMA, Toshio	Professor, Nara Institute of Science and Technology
	HIGASHIYAMA, Tetsuya	Professor, Nagoya University
	KONDO, Takao	Designated Professor, Nagoya University
	KURUMIZAKA, Hitoshi	Professor, Waseda University
	MIZUSHIMA, Noboru	Professor, The University of Tokyo
	MORI, Ikue	Professor, Nagoya University
	OHTA, Kunihiko	Professor, The University of Tokyo
	TAKABAYASHI, Junji ##	Professor, Kyoto University
	TANAKA, Ayumi	Professor, Hokkaido University
	TSUKITA, Sachiko	Professor, Osaka University
NIBB members	Name	Position
	FUJIMORI, Toshihiko	Professor, National Institute for Basic Biology
	HASEBE, Mitsuyasu	Professor, National Institute for Basic Biology
	IGUCHI, Taisen	Professor, Okazaki Institute for Integrative Bioscience
	KAWAGUCHI, Masayoshi	Professor, National Institute for Basic Biology
	KOBAYASHI, Satoru	Professor, Okazaki Institute for Integrative Bioscience
	MATSUZAKI, Masanori*	Professor, National Institute for Basic Biology
	NODA, Masaharu	Professor, National Institute for Basic Biology
	TAKADA, Shinji #	Professor, Okazaki Institute for Integrative Bioscience
	UENO, Naoto	Professor, National Institute for Basic Biology
	YAMAMORI, Tetsuo	Professor, National Institute for Basic Biology
	YOSHIDA, Shosei	Professor, National Institute for Basic Biology

Chairperson

Vice-Chair

* new member from April 2014