

## CENTER FOR RADIOISOTOPE FACILITIES



Head  
HASEBE, Mitsuyasu



Associate Professor  
OGAWA, Kazuo  
(Radiation Protection Supervisor)



Associate Professor  
KODAMA, Ryuji

### Technical Staff:

MATSUDA, Yoshimi  
(Radiation Protection Supervisor)  
SAWADA, Kaoru  
(Radiation Protection Supervisor)

### Technical Assistant:

IINUMA, Hideko  
ITO, Takayo  
KAMIYA, Kiyomi

The technical and supporting staff of the Center for Radioisotope Facilities (CRF) maintain controlled areas in compliance with the law. The CRF is responsible for monitoring the purchase of radioisotopes from JRIA (Japan Radioisotope Association) and the transfer of radioisotope wastes to JRIA.

Ms. Matsuda, Ms. Inuma, Ms. Ito, and Ms. Kamiya maintained the Myodaiji-Area. Dr. Ogawa and Ms. Sawada worked in the Yamate-Area. Dr. Ogawa, the associate professor of the radioisotope facilities, retired in March 2012 and Dr. Kodama arrived at the post in April, working in both areas.

The number of registrants and the number of users from January 2012 to December 2012 are shown in Table 1.

Users counted by the access control system of the controlled areas numbered 2,491 during this period. The numbers for each area are shown in Table 2. The annual changes of registrants and the number of totals per fiscal year are shown in Figure 1. The balance of radioisotopes received and used at the CRF is shown in Table 3. The training courses on radioisotope handling were given as in Table 4.

The followings are CRF's notable activities in 2012.

1. A lecture was given on the relationship of Radon concentration in the air and earthquakes by an invited speaker (Dr. Yumi Yasuoka, Lecturer, Kobe Pharmaceutical University) as the 2012 special lecture for radiation workers.
2. At the Myodaiji-area, the exhaust fan of line 2 expired and was exchanged. (See Figure 2, A, B.)
3. At the Yamate-area, the access control system of the controlled areas was updated. The new system uses IC cards meeting the FeliCa standard and will be compatible in the future with the access control system of all Yamate-area buildings.

	Myodaiji-Area	Yamate-Area
registrants	97	70
users	42	34

Table 1. Numbers of registrants and users at Myodaiji-Area and Yamate-Area in 2012

	Myodaiji-Area	Yamate-Area	total
users	1737	754	2491
visitors	214	175	389
total	1951	929	2880

Table 2. Users and visitors who entered each controlled area in 2012

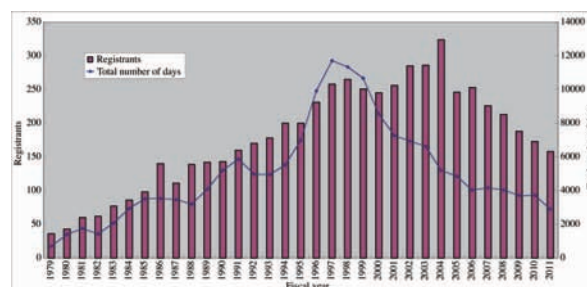


Figure 1. Annual changes of registrants and number of totals per fiscal year

	Myodaiji-Area	Yamate-Area	total
<sup>125</sup> I Received	370000	966	370966
<sup>125</sup> I Used	328100	766	328866
<sup>35</sup> S Received	0	94000	94000
<sup>35</sup> S Used	0	52600	52600
<sup>32</sup> P Received	214000	78250	292250
<sup>32</sup> P Used	142300	71850	214150
<sup>14</sup> C Received	55500	0	55500
<sup>14</sup> C Used	52633	0	52633
<sup>3</sup> H Received	305250	6475000	6780250
<sup>3</sup> H Used	80357	6937500	7017857

Table 3. Balance of radioisotopes received and used (kBq) at each controlled area in 2012

training course	place	numbers of participant
beginners training course for beginners*	Myodaiji	5
beginners training course for beginners*	Yamate	8
beginners training course for experts	Myodaiji	7
beginners training course for experts	Yamate	4
Users training course*	Myodaiji	72
Users training course	Yamate	44

\*included English course

Table 4. Training courses for radiation workers in 2012



Figure 2. The CRF's notable activities in 2012

A, B: The exhaust fan was exchanged. A shows the old fan and B shows the new fan.

C, D: The access control system of the controlled areas was updated. C shows the card reader of the radioisotope storage room entrance. D shows a card reader for the FeliCa standard card.