

**CENTER FOR RADIOISOTOPE FACILITIES  
(OKAZAKI RESEARCH FACILITIES)**



**Head**  
HASEBE, Mitsuyasu



**Associate Professor**  
OGAWA, Kazuo  
(Radiation Protection Supervisor)

**Technical Staff:**

**MATSUDA, Yoshimi**  
(Radiation Protection Supervisor)  
**SAWADA, Kaoru**  
(Radiation Protection Supervisor)

**Technical Assistants:**

**ITO, Takayo**  
**KAMIYA, Kiyomi**

The technical and supporting staff of the Center for Radioisotope Facilities (CRF) maintain controlled areas according to Japanese law. The CRF is responsible for monitoring the purchase of radioisotopes from JRIA (Japan Radioisotope Association) and the transfer of radioisotope wastes to JRIA.

Matsuda, Inuma, Ito, and Kamiya maintained the Myodaiji-Area. Ogawa and Sawada worked in the Yamate-Area.

The number of registrants and the number of users from January 2010 to December 2010 are presented in Table 1.

Users counted by the monitoring system going in and out of the controlled areas numbered 3,760 persons during this period. The percentages and numbers for each area are shown in Figure 1 and Table 2. The annual changes of registrants and the number of totals per year are shown in Figure 2.

The balance of radioisotopes received at the CRF is shown in Table 3.

The Myodaiji-Area consists of two controlled area, CFBI (Common Facilities Building I)-branch and LGER (Laboratory of Gene Expression and Regulation)-branch. Since LGER-branch users decreased over the years, it was closed on August 31st in accordance with the law (Figure 3). The CFBI-branch was renamed to the Myodaiji-area of CRF.

	Myodaiji-Area	Yamate-Area
registrants	114	77
users	61	34

Table 1. Numbers of registrants and users at Myodaiji-Area and Yamate-Area in 2010

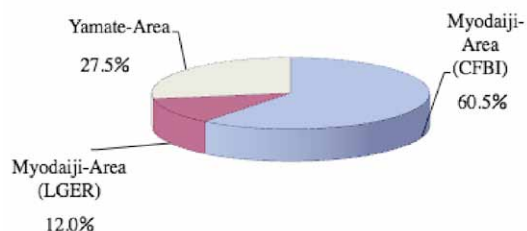


Figure 1. Percentage of users going in and out of each controlled area in 2010

	Myodaiji-Area		Yamate-Area	total
	CFBI-branch	LGER-branch		
users	2086	347	889	3322
visitors	190	105	143	438
total	2276	452	1032	3760

Table 2. Users and visitors who entered each controlled area in 2010

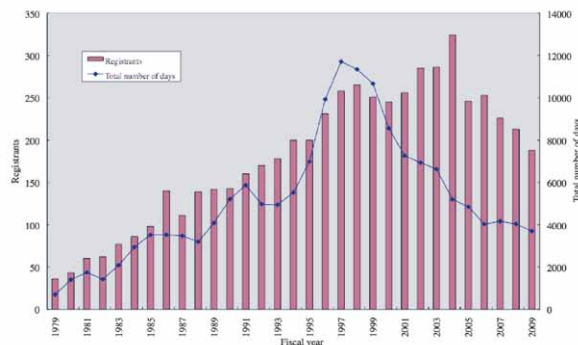


Figure 2. Annual changes of registrants and number of totals per fiscal year

	Myodaiji-Area		Yamate-Area	total
	CFBI-branch	LGER-branch*		
<sup>125</sup> I Received	37000	—	1130	38130
<sup>125</sup> I Used	1850	—	1221	3071
<sup>45</sup> Ca Received	0	0	—	0
<sup>45</sup> Ca Used	0	0	—	0
<sup>35</sup> S Received	1073000	0	0	1073000
<sup>35</sup> S Used	1164036	0	0	1164036
<sup>32</sup> P Received	1310000	0	248750	1558750
<sup>32</sup> P Used	1318000	0	170990	1488990
<sup>14</sup> C Received	277870	0	0	277870
<sup>14</sup> C Used	173857	0	0	173857
<sup>3</sup> H Received	666250	0	2812000	3478250
<sup>3</sup> H Used	122943	0	2319604	2442547
<sup>22</sup> Na Received	3700	—	—	3700
<sup>22</sup> Na Used	2979	—	—	2979

\*LGER was closed at August 2010.

Table 3. Balance of radioisotopes received and used (kBq) at each controlled area in 2010

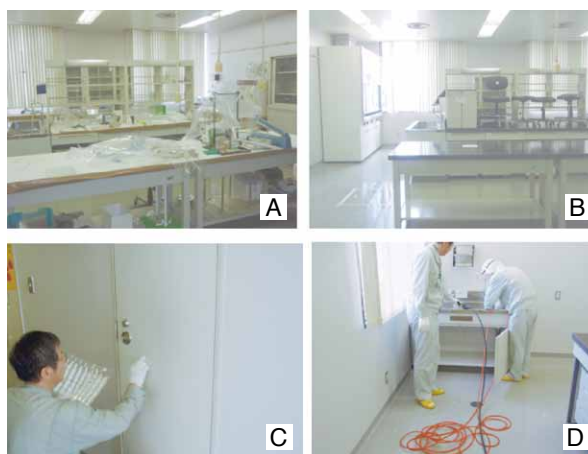


Figure 3. Cleaning controlled area, LGER-branch, for closing  
A: Before cleaning of room No.G603  
B: After cleaning of room No.G603  
C: Checking radiation contamination  
D: Cleaning the drainpipe