

**CENTER FOR RADIOISOTOPE FACILITIES  
(OKAZAKI RESEARCH FACILITIES)**



*Head*  
**HASEBE, Mitsuyasu**

*Associate Professor:* **OGAWA, Kazuo**  
(Radiation Protection Supervisor)

*Technical Staff:* **MATSUDA, Yoshimi**  
(Radiation Protection Supervisor)

*Technical Assistants:* **SAWADA, Kaoru**  
**IINUMA, Hideko**  
**ITO, Takayo**  
**KAMIYA, Kiyomi**

The technical and supporting staff of the Center for Radioisotope Facilities (CRF) maintain three controlled areas according to Japanese law. The CRF is responsible for monitoring the purchase of radioisotopes from JRIA (Japan Radioisotope Association) and the transfer of radioisotope wastes to JRIA.

Matsuda, Inuma, Ito, and Kamiya maintained CFBI (Common Facilities Building I)-branch and LGER (Laboratory of Gene Expression and Regulation)-branch in the Myodaiji-Area. Ogawa and Sawada worked in the Yamate-Area.

The number of registrants and the number of users from January 2009 to December 2009 are presented in Table 1.

Users counted by the monitoring system going in and out of the controlled areas numbered 3,764 persons during this period. The percentages and numbers for each area are shown in Figure 1 and Table 2. The annual changes of registrants and the number of totals per year are shown in Figure 2.

The balance of radioisotopes received at the CRF is shown in Table 3.

Thirty years have passed since the CFBI-branch opened and some parts of the air supply and exhaust system have deteriorated. Figure 3 shows the repair work done on the CFBI-branch to accommodate the law.

	Myodaiji-Area	Yamate-Area
registrants	134	88
users	69	39

Table 1. Numbers of registrants and users at Myodaiji-Area and Yamate-Area in 2009

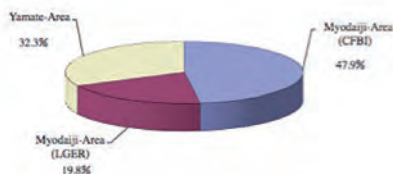


Figure 1. Percentage of users going in and out of each controlled area in 2009

	Myodaiji-Area	Yamate-Area	total
	CFBI-branch	LGER-branch	
users	1596	686	1094
visitors	205	61	122
total	1801	747	1216

Table 2. Users and visitors who entered each controlled area in 2009

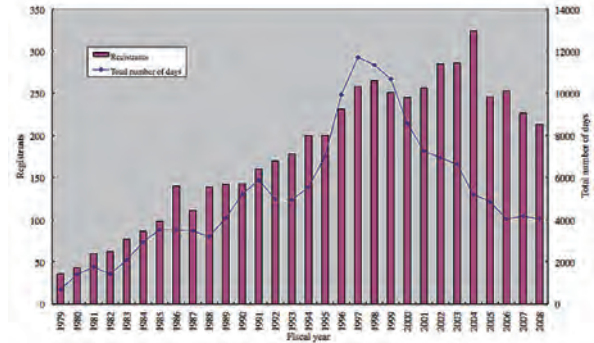


Figure 2. Annual changes of registrants and number of totals per fiscal year

	Myodaiji-Area	Yamate-Area	total
	CFBI-branch	LGER-branch	
<sup>125</sup> I Receive	0	0	1205
<sup>125</sup> I Used	0	0	1114
<sup>45</sup> Ca Receive	0	0	-
<sup>45</sup> Ca Used	0	0	-
<sup>35</sup> S Receive	259000	0	20000
<sup>35</sup> S Used	66630	0	4000
<sup>32</sup> P Receive	1239000	176000	237000
<sup>32</sup> P Used	992435	228600	192100
<sup>14</sup> C Receive	66600	0	185
<sup>14</sup> C Used	27783	0	42
<sup>3</sup> H Receive	412550	0	6484250
<sup>3</sup> H Used	53212	0	6578775

Table 3. Balance of radioisotopes received and used (kBq) at each controlled area in 2009



Figure 3. Repair work on air supply & exhaust system at CFBI-branch  
A: The room re-heaters were replaced.  
B: The air supply system's eliminators were replaced.  
C: The exhaust fan was repaired.