

# ORGANIZATION OF THE NATIONAL INSTITUTE FOR BASIC BIOLOGY

The National Institute for Basic Biology (NIBB) was founded in 1977 on a hill overlooking the old town of Okazaki in Aichi prefecture as one of the Inter-University Research Institutes to promote and stimulate studies of biology. NIBB conducts first-rate research on site as well as in cooperation with national, public and private universities and research organizations. NIBB attempts to elucidate the general and fundamental mechanisms underlying various biological phenomena throughout a wide variety of biological fields, such as cell biology, developmental biology, neurobiology, evolutionary biology, environmental biology, and theoretical biology.

NIBB and four other national institutes, the National Astronomical Observatory of Japan (NAOJ), the National Institute for Fusion Science (NIFS), the National Institute for Physiological Sciences (NIPS), and the Institute for Molecular Science (IMS), constitute the National Institutes of Natural Sciences (NINS), which is one of the four Inter-University Research Institute Corporations. NIBB's activities are supported by the Ministry of Education, Culture, Sports, Science and Technology (MEXT) of Japan. The Okazaki Institute for Integrative Bioscience was established as a common facility for the three institutes (NIBB, NIPS, and IMS) of the Okazaki campus.



Buildings in the Myodaiji area (left) and Yamate area (right).

## Policy, Decision Making, and Administration

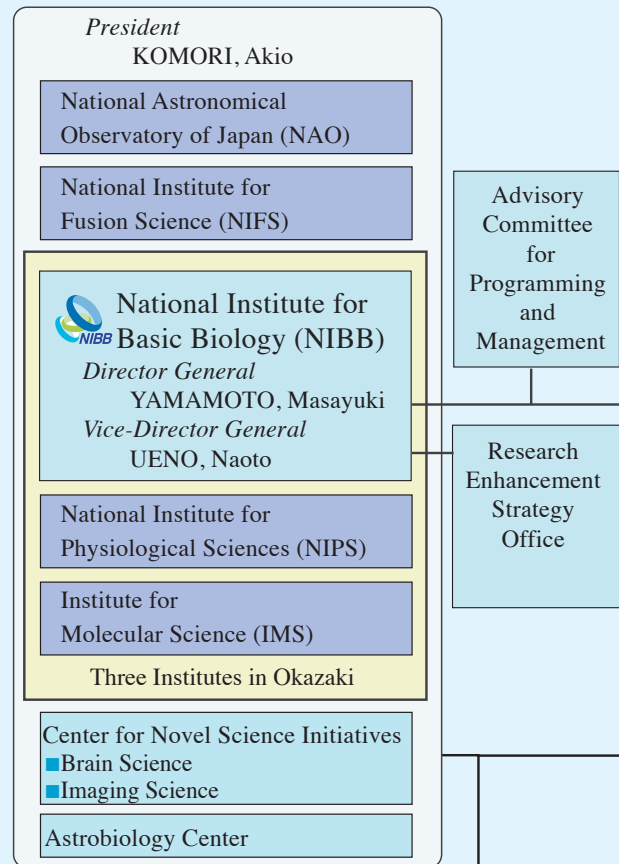
The Director General oversees the operation of NIBB, assisted by the Advisory Committee for Programming and Management. The Advisory Committee, comprised of eleven professors within NIBB and ten leading biologists outside NIBB, advises the Director General on important matters such as planning joint research programs as well as on the scientific activities of NIBB. The Advisory Committee makes recommendations on the appointments of new Directors General, faculty appointments, NIBB's annual budget and future prospects.

The Research Enhancement Strategy Office, aimed at supporting researchers in order to improve NIBB's abilities as a collaborative research institution, was restructured in 2013 from the former Strategic Planning Department, Office of Public Relations, and Office of International Cooperation. The Office is made up of six groups (p. 90) and its activities are mainly carried out by URAs (University Research Administrators) in close collaboration with the NINS's Research Enhancement Promotion Headquarters.

Administration of NIBB is undertaken by the Okazaki Administration Office under the direct auspices of the Administration Office of NINS.

## Organization

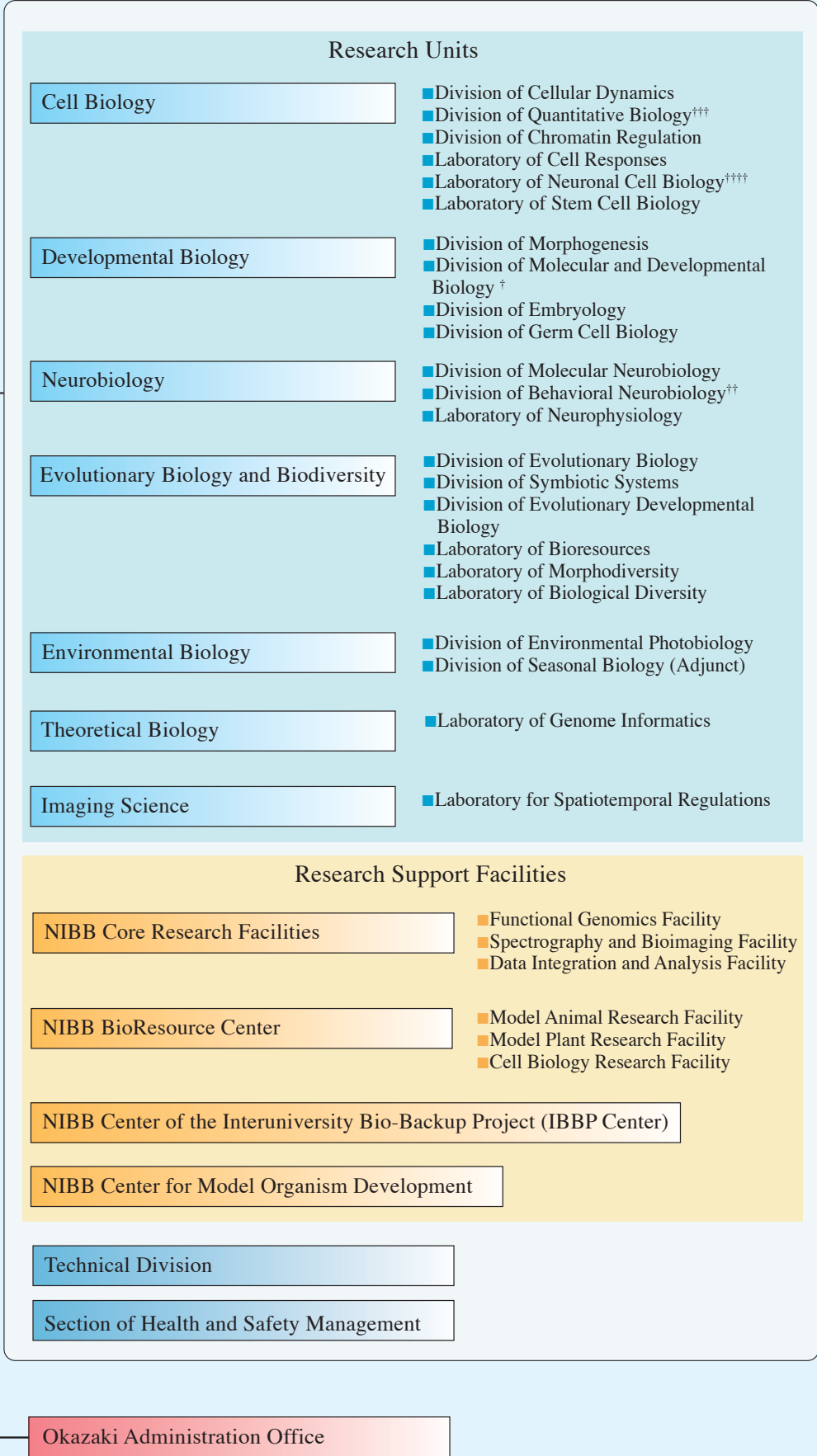
### National Institutes of Natural Sciences (NINS)



### Okazaki Research Facilities



- Evaluation and Information Group
- Public Relations Group
- International Cooperation Group
- Collaborative Research Group
- Young Researcher Support Group
- Gender Equality Promotion Group

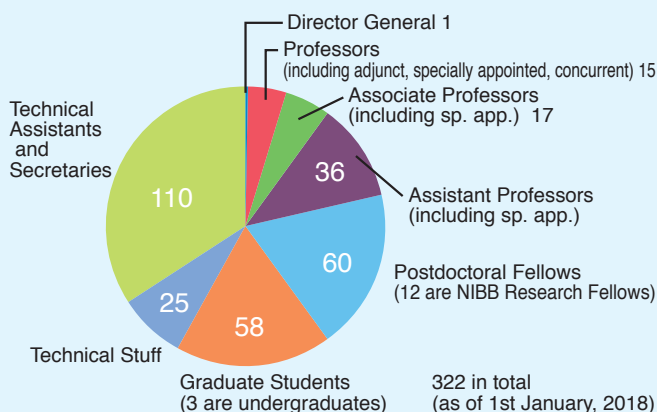


## Research and Research Support

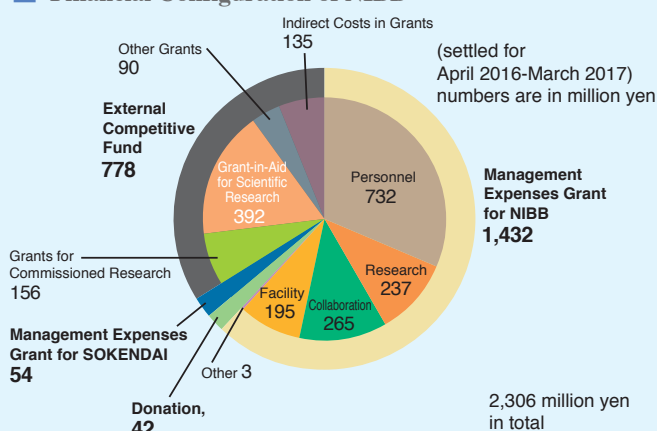
NIBB's research programs are conducted in research units and research support units. Each research unit is called either a division, led by a professor, or a laboratory, led by an associate professor or an assistant professor. Each research unit forms an independent project team. The NIBB Core Research Facilities and NIBB BioResource Center were launched in 2010 to support research in NIBB and also to act as an intellectual hub to promote collaboration among the researchers of NIBB and other institutions. The NIBB Center of the Inter-University Bio-Backup Project (IBBP Center) was founded in 2012 to prevent loss of invaluable biological resources. Projects for the development of bioresource preservation technology are solicited by the IBBP center from 2013. The NIBB Center for Model Organism Development was founded in 2013 to promote development of new model organisms and research using them. The Technical Division manages the activities of the technical staff and helps to promote the activities of each research unit and to maintain the common resources of both the research support units of NIBB and the research facilities of the Okazaki campus. Center for Radioisotope Facilities are one of the latter and run by the technical staff of NIBB.

The Okazaki Institute for Integrative Bioscience was founded to conduct interdisciplinary molecular research on various biological phenomena and is shared by all three institutes in Okazaki. Some of the divisions also function as NIBB divisions.

### Members in NIBB



### Financial Configuration of NIBB



### Members of the Advisory Committee for Programming and Management# (as of April, 2017)

Non-NIBB members	Name	Position
	AGATA, Kiyokazu*	Professor, Gakushuin University
	HIRAOKA, Yasushi*	Professor, Osaka University
	KOHCHI, Takayuki*	Professor, Kyoto University
	KOHSHIMA, Shiro	Professor, Kyoto University
	KUME, Shoen	Professor, Tokyo Institute of Technology
	NISHITANI, Kazuhiko ##	Professor, Tohoku University
	NOSE, Akinao	Professor, The University of Tokyo
	SASAKI, Hiroyuki*	Professor/ Senior Vice President, Kyushu University
	SUGIMOTO, Asako*	Professor, Tohoku University
	YAMAMOTO, Takashi	Professor, Hiroshima University
NIBB members	Name	Position
	FUJIMORI, Toshihiko	Professor, National Institute for Basic Biology
	HASEBE, Mitsuyasu #	Professor, National Institute for Basic Biology
	HIGASHIJIMA, Shin-ichi	Professor, Okazaki Institute for Integrative Bioscience
	KAWAGUCHI, Masayoshi	Professor, National Institute for Basic Biology
	MINAGAWA, Jun	Professor, National Institute for Basic Biology
	NIIMI, Teruyuki	Professor, National Institute for Basic Biology
	NODA, Masaharu	Professor, National Institute for Basic Biology
	TAKADA, Shinji	Professor, Okazaki Institute for Integrative Bioscience
	UEDA, Takashi*	Professor, National Institute for Basic Biology
	UENO, Naoto	Professor, National Institute for Basic Biology
	YOSHIDA, Shosei	Professor, National Institute for Basic Biology

# Chairperson

## Vice-Chair

\* new member from April 2017