

ORGANIZATION OF THE NATIONAL INSTITUTE FOR BASIC BIOLOGY

The National Institute for Basic Biology (NIBB) was founded in 1977 on a hill overlooking the old town of Okazaki in Aichi prefecture as one of the Inter-University Research Institutes to promote and stimulate studies of biology. NIBB conducts first-rate research on site as well as in cooperation with national, public and private universities and research organizations. NIBB attempts to elucidate the general and fundamental mechanisms underlying various biological phenomena throughout a wide variety of biological fields, such as cell biology, developmental biology, neurobiology, evolutionary biology, environmental biology, and theoretical biology.

NIBB and four other national institutes, the National Astronomical Observatory (NAO), the National Institute for Fusion Science (NIFS), the National Institute for Physiological Sciences (NIPS), and the Institute for Molecular Science (IMS), constitute the National Institutes of Natural Sciences (NINS), which is one of the four Inter-University Research Institute Corporations. NIBB's activities are supported by the Ministry of Education, Culture, Sports, Science and Technology (MEXT) of Japan. The Okazaki Institute for Integrative Bioscience (OIIB) was established as a common facility for the three institutes (NIBB, NIPS, and IMS) of the Okazaki campus.



Buildings in the Myodaiji area (left) and Yamate area (right).

Policy, Decision Making, and Administration

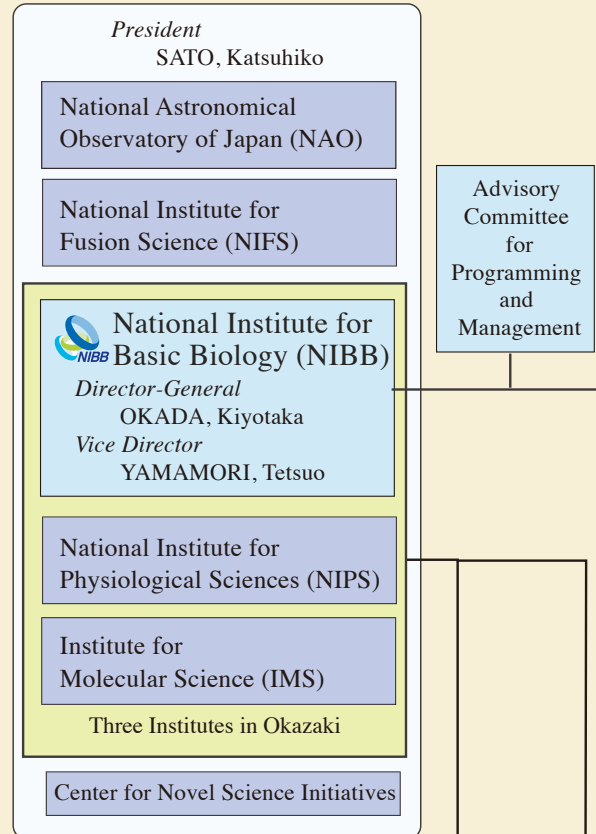
The Director-General oversees the operation of NIBB, assisted by the Advisory Committee for Programming and Management. The Advisory Committee, comprised of professors within NIBB and an equal number of leading biologists outside NIBB, advises the Director-General on important matters such as planning joint research programs as well as on the scientific activities of NIBB. The Advisory Committee makes recommendations on the appointments of new Directors-General, faculty appointments, NIBB's annual budget and future prospects.

The Strategic Planning Department assists the Director-General with NIBB's evaluation procedures and in planning a long-range strategy for the institute. The Office of Public Relations and the Office of International Cooperation are central offices for public relations and the management of conferences and other extramural activities.

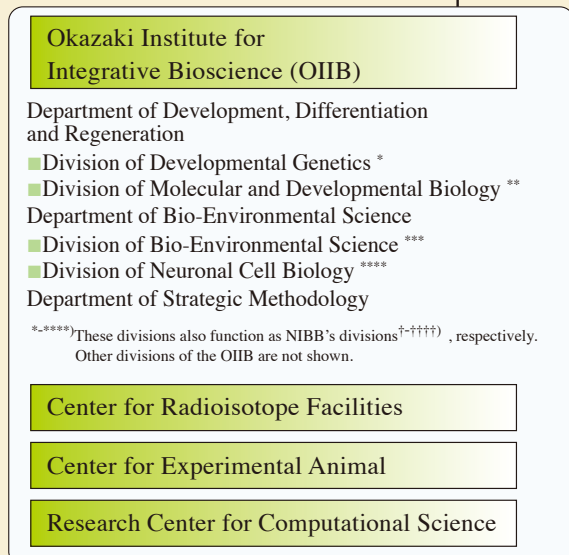
Administration of NIBB is undertaken by the Okazaki Administration Office under the direct auspices of the Administration Office of NINS.

Organization

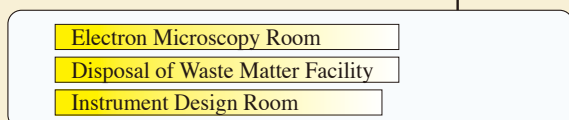
National Institutes of Natural Sciences (NINS)



Okazaki Research Facilities

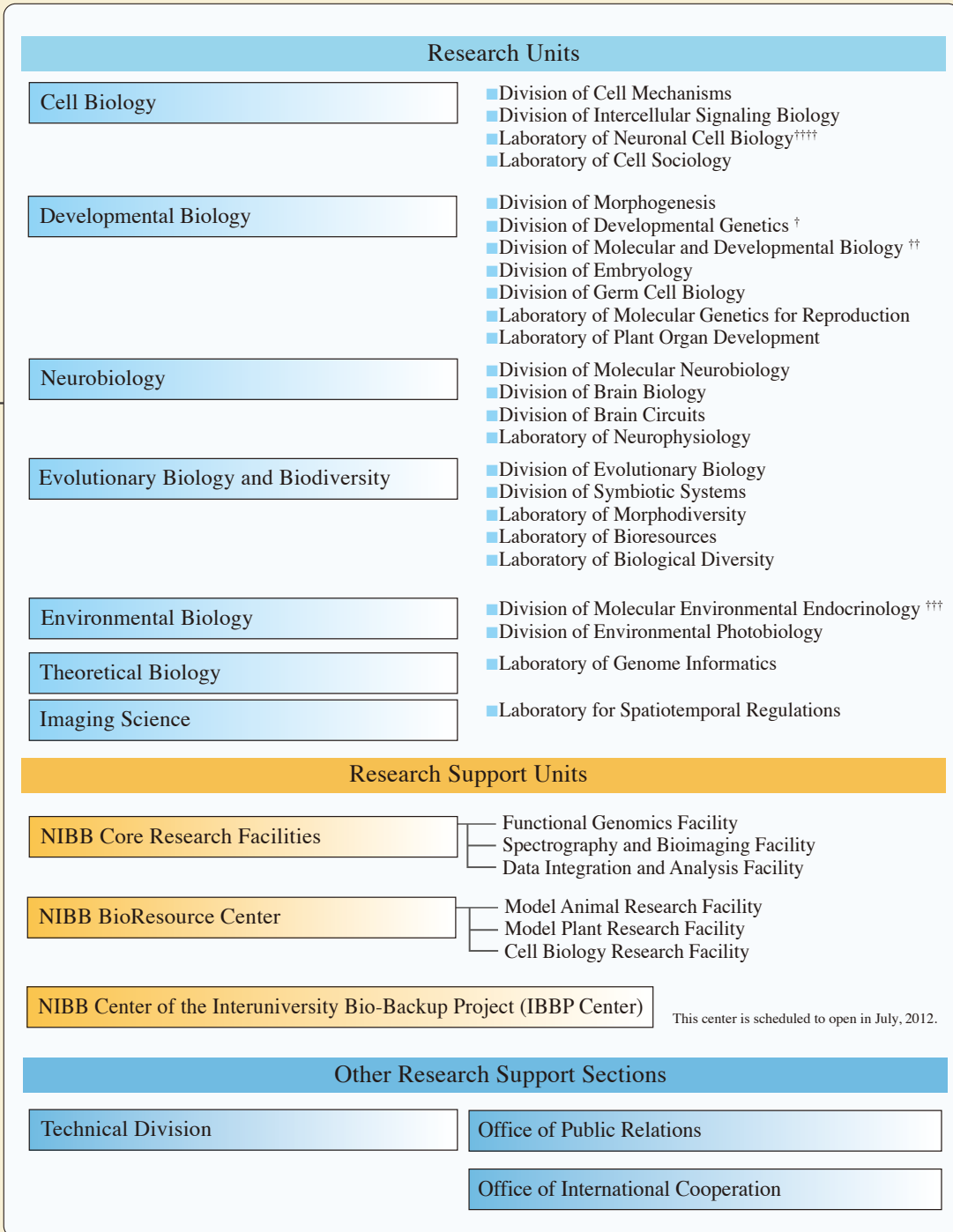


Research Facilities run jointly by NIBB and NIPS



*..****) These divisions also function as NIBB's divisions^{†-††††}, respectively. Other divisions of the OIIB are not shown.

Strategic
Planning
Department



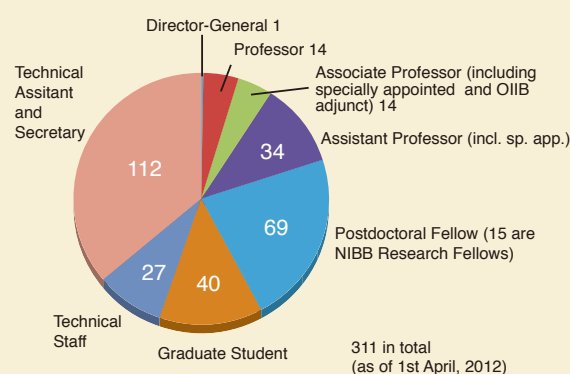
Okazaki Administration Office

Research and Research Support

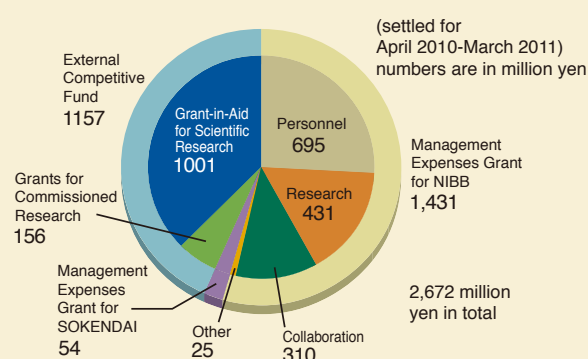
NIBB's research programs are conducted in research units and research support units. Each research unit is called either a division, led by a professor, or a laboratory, led by an associate professor or an assistant professor. Each research unit forms an independent project team. The NIBB Core Research Facilities and NIBB BioResource Center were launched in 2010 to support research in NIBB and also to act as an intellectual hub to promote collaboration among the researchers of NIBB and other institutions. The NIBB Center of the Interuniversity Bio-Backup Project (IBBP Center) will be founded in 2012 to prevent loss of invaluable biological resources. The Technical Division manages the activities of the technical staff and helps to promote the activities of each research unit and to maintain the common resources of both the research support units of NIBB and the research facilities of the Okazaki campus. The Center for Radioisotope Facilities are one of the latter and are run by the technical staff of NIBB.

The Okazaki Institute for Integrative Bioscience was founded to conduct interdisciplinary molecular research on various biological phenomena and is shared by all three institutes in Okazaki. Some of the divisions also function as NIBB divisions.

Members in NIBB



Financial Configuration of NIBB



Members of the Advisory Committee for Programming and Management* (as of April, 2012)

Chairperson	IGUCHI, Taisen	Professor, Okazaki Institute for Integrative Bioscience
Vice-Chair	KONDO, Takao*	Professor, Nagoya University
Non-NIBB members	HIGASHIYAMA, Tetsuya**	Professor, Nagoya University
	MIZUSHIMA, Noboru*	Professor, Tokyo Medical and Dental University
	MORI, Ikuo*	Professor, Nagoya University
	SHIMAMOTO, Ko*	Professor, Nara Institute of Science and Technology
	SIOMI, Haruhiko*	Professor, Keio University
	TAKABAYASHI, Junji*	Professor, Kyoto University
	TANAKA, Ayumi*	Professor, Hokkaido University
	UEMURA, Tadashi*	Professor, Kyoto University
	YAMAMOTO, Masayuki*	Director, Kazusa DNA Research Institute
NIBB members	FUJIMORI, Toshihiko	Professor, National Institute for Basic Biology
	HASEBE, Mitsuyasu	Professor, National Institute for Basic Biology
	KAWAGUCHI, Masayoshi*	Professor, National Institute for Basic Biology
	KOBAYASHI, Satoru	Professor, Okazaki Institute for Integrative Bioscience
	NISHIMURA, Mikio	Professor, National Institute for Basic Biology
	NODA, Masaharu	Professor, National Institute for Basic Biology
	TAKADA, Shinji	Professor, Okazaki Institute for Integrative Bioscience
	UENO, Naoto	Professor, National Institute for Basic Biology
	YAMAMORI, Tetsuo	Professor, National Institute for Basic Biology
	YOSHIDA, Shosei	Professor, National Institute for Basic Biology

* new member from April 2011

** new member from April 2012