

ORGANIZATION OF THE NATIONAL INSTITUTE FOR BASIC BIOLOGY

The National Institute for Basic Biology (NIBB) was founded in 1977 on a hill overlooking the old town of Okazaki in Aichi prefecture as one of the Inter-University Research Institutes to promote and stimulate studies of biology. NIBB conducts first-rate research on site as well as in cooperation with national, public and private universities and research organizations. NIBB attempts to elucidate the general and fundamental mechanisms underlying various biological phenomena throughout a wide variety of biological fields, such as cell biology, developmental biology, neurobiology, evolutionary biology, environmental biology, and theoretical biology.

NIBB and four other national institutes, the National Astronomical Observatory (NAO), the National Institute for Fusion Science (NIFS), the National Institute for Physiological Sciences (NIPS), and the Institute for Molecular Science (IMS), constitute the National Institutes of Natural Sciences (NINS), which is one of the four Inter-University Research Institute Corporations. NIBB's activities are supported by the Ministry of Education, Culture, Sports, Science and Technology (MEXT) of Japan. The Okazaki Institute for Integrative Bioscience was established as a common facility for the three institutes (NIBB, NIPS, and IMS) of the Okazaki campus.



Buildings in the Myodaiji area (left) and Yamate area (right).

Policy, Decision Making, and Administration

The Director-General oversees the operation of NIBB, assisted by the Advisory Committee for Programming and Management. The Advisory Committee, comprised of professors within NIBB and an equal number of leading biologists outside NIBB, advises the Director-General on important matters such as planning joint research programs as well as on the scientific activities of NIBB. The Advisory Committee makes recommendations on the appointments of new Directors-General, faculty appointments, NIBB's annual budget and future prospects.

The Strategic Planning Department assists the director-general with NIBB's evaluation procedures and in planning a long-range strategy for the institute. The Office of Public Relations and International Cooperation is a central office for public relations and the management of conferences and other extramural activities.

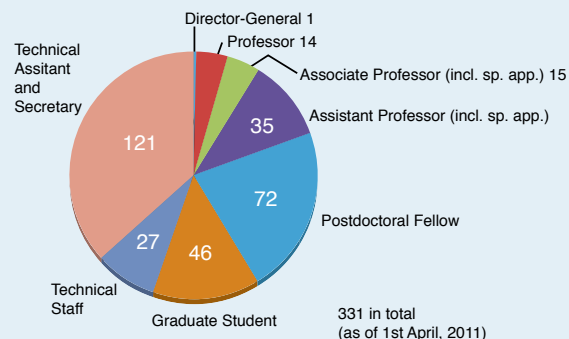
Administration of NIBB is undertaken by the Okazaki Administration Office under the direct auspices of the Administration Office of NINS.

Research and Research Support

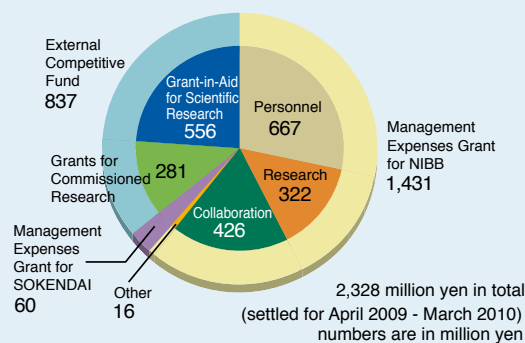
NIBB conducts its research programs through twenty-five research units and two research support units. Each research unit is called either a division, led by a professor, or a laboratory, led by an associate professor or an assistant professor. Each research unit forms an independent project team. The NIBB Core Research Facilities and NIBB BioResource Center were launched in 2010 to support basic biology research in NIBB and also to act as an intellectual hub to promote collaboration among the researchers of NIBB and other academic institutions. The Technical Division manages the activities of the technical staff and helps to promote the activities of each research unit and to maintain the common resources of both the research support units of the NIBB and the research facilities of the Okazaki campus. The Center for Radioisotope Facilities is one of the latter and run by the technical staff of NIBB.

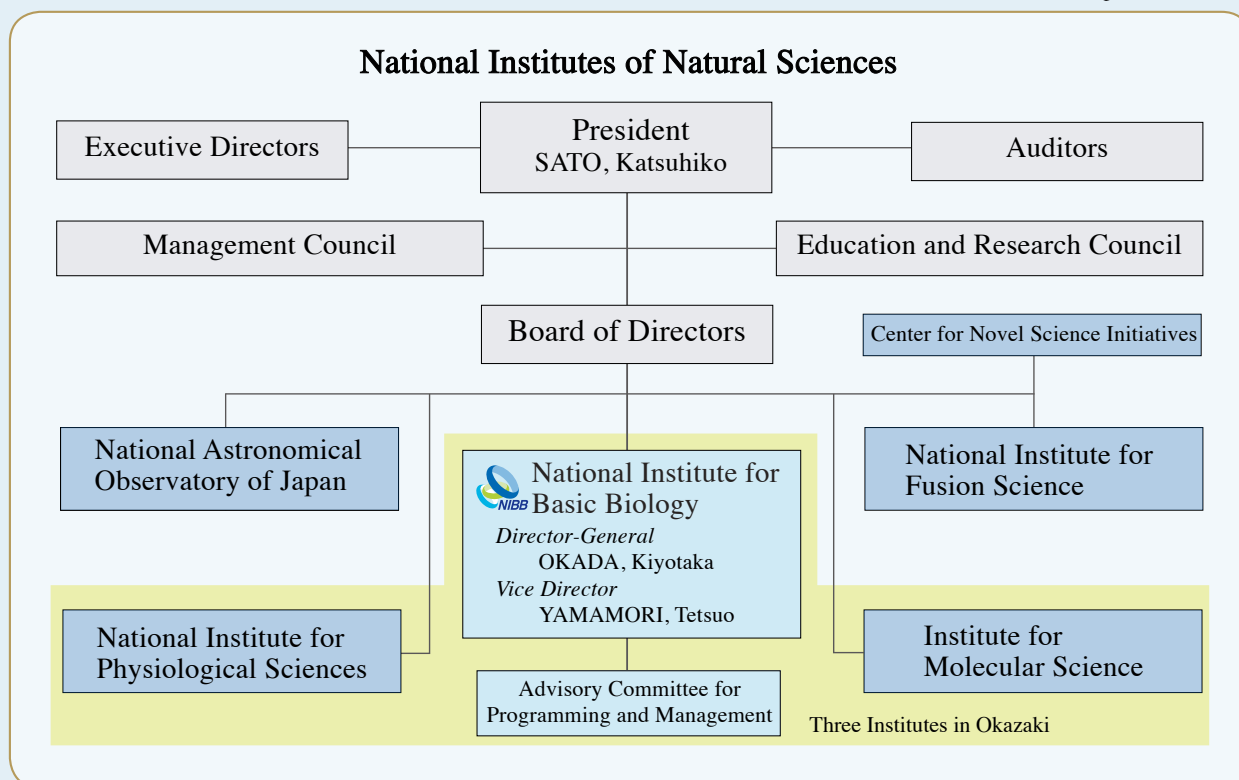
The Okazaki Institute for Integrative Bioscience was founded to conduct interdisciplinary molecular research on various biological phenomena and is shared by all three institutes in Okazaki. Some of its divisions also function as NIBB divisions.

Members in NIBB



Financial Configuration of NIBB





■ Members of the Advisory Committee for Programming and Management* (as of April, 2011)

Non-NIBB members	KONDO, Takao	Professor, Nagoya University
	MIZUSHIMA, Noboru	Professor, Tokyo Medical and Dental University
	MORI, Ikue	Professor, Nagoya University
	SEHARA, Atsuko	Professor, Kyoto University
	SHIMAMOTO, Ko	Professor, Nara Institute of Science and Technology
	SIOMI, Haruhiko	Professor, Keio University
	TAKABAYASHI, Junji	Professor, Kyoto University
	TANAKA, Ayumi	Professor, Hokkaido University
	UEMURA, Tadashi	Professor, Kyoto University
	YAMAMOTO, Masayuki	Professor, The University of Tokyo
NIBB members	FUJIMORI, Toshihiko	Professor, National Institute for Basic Biology
	HASEBE, Mitsuyasu	Professor, National Institute for Basic Biology
	IGUCHI, Taisen	Professor, Okazaki Institute for Integrative Bioscience
	KAWAGUCHI, Masayoshi	Professor, National Institute for Basic Biology
	KOBAYASHI, Satoru	Professor, Okazaki Institute for Integrative Bioscience
	NISHIMURA, Mikio	Professor, National Institute for Basic Biology
	NODA, Masaharu	Professor, National Institute for Basic Biology
	TAKADA, Shinji	Professor, Okazaki Institute for Integrative Bioscience
	UENO, Naoto	Professor, National Institute for Basic Biology
YAMAMORI, Tetsuo	Professor, National Institute for Basic Biology	
YOSHIDA, Shosei	Professor, National Institute for Basic Biology	

* Chairperson and vice-chair will be nominated at meeting scheduled for the end of June, 2011.

Research Units

Cell Biology

- Division of Cell Mechanism
- Division of Intercellular Signaling Biology
- Laboratory of Neuronal Cell Biology^{††††}
- Laboratory of Cell Structure
- Laboratory of Cell Sociology

Developmental Biology

- Division for Morphogenesis
- Division of Developmental Genetics[†]
- Division of Molecular and Developmental Biology^{††}
- Division of Embryology
- Division of Germ Cell Biology
- Laboratory of Molecular Genetics for Reproduction
- Laboratory of Plant Organ Development

Neurobiology

- Division of Molecular Neurobiology
- Division of Brain Biology
- Division of Brain Circuits
- Laboratory of Neurophysiology

Evolutionary Biology and Biodiversity

- Division of Evolutionary Biology
- Division of Symbiotic Systems
- Laboratory of Morphodiversity
- Laboratory of Bioresource
- Laboratory of Biological Diversity

Environmental Biology

- Division of Molecular Environmental Endocrinology^{†††}
- Division of Environmental Photobiology

Theoretical Biology

- Laboratory of Genome Informatics

Imaging Science

- Laboratory for Spatiotemporal Regulations

Research Support Units

NIBB Core Research Facilities

- Functional Genomics Facility
- Spectrography and Bioimaging Facility
- Data Integration and Analysis Facility

NIBB BioResource Center

- Model Animal Research Facility
- Model Plant Research Facility
- Cell Biology Research Facility

Other Research Support Sections

Technical Division

Strategic Planning Department

Office of Public Relations and International Cooperation

Okazaki Research Facilities

Okazaki Institute for Integrative Bioscience

Department of Development, Differentiation and Regeneration

Center for Radioisotope Facilities

- Division of Developmental Genetics^{*}
- Division of Molecular and Developmental Biology^{**}

Center for Experimental Animal

Department of Bio-Environmental Science

Research Center for Computational Science

- Division of Bio-Environmental Science^{***}
- Division of Neuronal Cell Biology^{****}

Department of Strategic Methodology

^{*,****} These divisions also function as NIBB's divisions in the above table^{††††}, respectively. Other divisions of the OIIB are not shown.

Research Facilities run jointly with National Institute for Physiological Sciences

Electron Microscopy Room

Instrument Design Room

Disposal of Waste Matter Facility