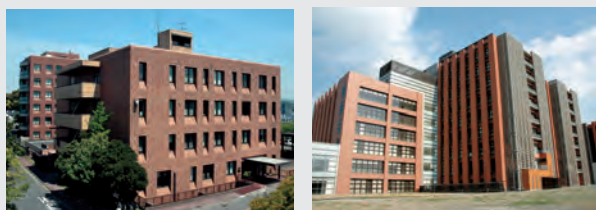


ORGANIZATION OF THE NATIONAL INSTITUTE FOR BASIC BIOLOGY

The National Institute for Basic Biology (NIBB) was founded in 1977 on a hill overlooking the old town of Okazaki in Aichi prefecture as one of the Inter-University Research Institutes to promote and stimulate studies of biology. NIBB conducts first-rate research on site as well as in cooperation with national, public and private universities and research organizations. NIBB attempts to elucidate the general and fundamental mechanisms underlying various biological phenomena throughout a wide variety of biological fields, such as cell biology, developmental biology, neurobiology, evolutionary biology, environmental biology, and theoretical biology.

NIBB and four other national institutes, the National Astronomical Observatory (NAO), the National Institute for Fusion Science (NIFS), the National Institute for Physiological Sciences (NIPS), and the Institute for Molecular Science (IMS), constitute the National Institutes of Natural Sciences, which is one of the four Inter-University Research Institute Corporations. NIBB's activities are supported by the Ministry of Education, Culture, Sports, Science and Technology (MEXT) of Japan. The Okazaki Institute for Integrative Bioscience was established as a common facility for the three institutes (NIBB, NIPS, and IMS) of the Okazaki campus.



Buildings in the Myodaiji area (left) and Yamate area (right).

Policy, Decision Making, and Administration

The Director-General oversees the operation of the NIBB, assisted by the Advisory Committee for Programming and Management. The Advisory Committee, comprised of professors within the NIBB and an equal number of leading biologists outside the NIBB, advises the Director-General on important matters such as planning joint research programs as well as on the scientific activities of the NIBB. The Advisory Committee makes recommendations on the appointments of new Director-Generals, faculty appointments, the NIBB's annual budget and future prospects.

The Strategic Planning Department is a central office for public relations and the management of conferences and other extramural activities. The department also assists the director-general with NIBB's evaluation procedures and in planning a long-range strategy for the institute.

Administration of the NIBB is undertaken by the Okazaki Administration Office under the direct auspices of the Administration Office of NINS.

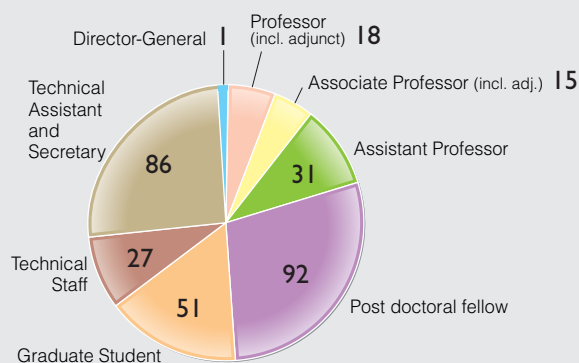
Research and Its Support

The NIBB conducts its research programs through thirty-one research units and three research support units. Each research unit is called either a division, led by a professor, or a laboratory, led by an associate professor or an assistant professor. Each research unit forms an independent project team. Some of the research units are adjunct and led by professors who hold joint appointments with other universities. Adjunct divisions have a resident assistant professor. This arrangement facilitates exchange in research activities in Japan. The Technical Division manages the activities of the technical staff and helps to promote the research activities of each research unit and to maintain the common research resources of both the research support units of the NIBB and some of the research facilities of the Okazaki campus.

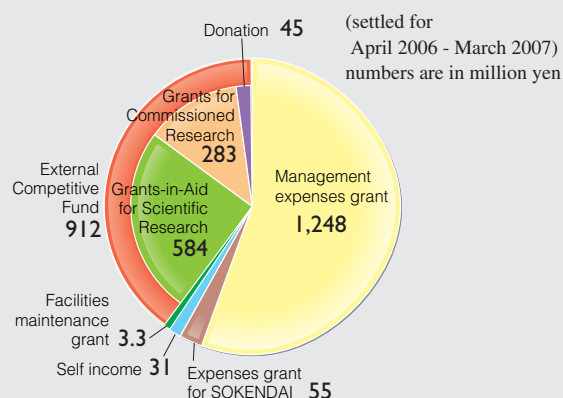
The Okazaki Institute for Integrative Bioscience was founded to conduct interdisciplinary molecular research on various biological phenomena and is shared by all three institutes in Okazaki. Some of the divisions function also as NIBB's divisions.

Members in the NIBB

(as of 1st April, 2007)

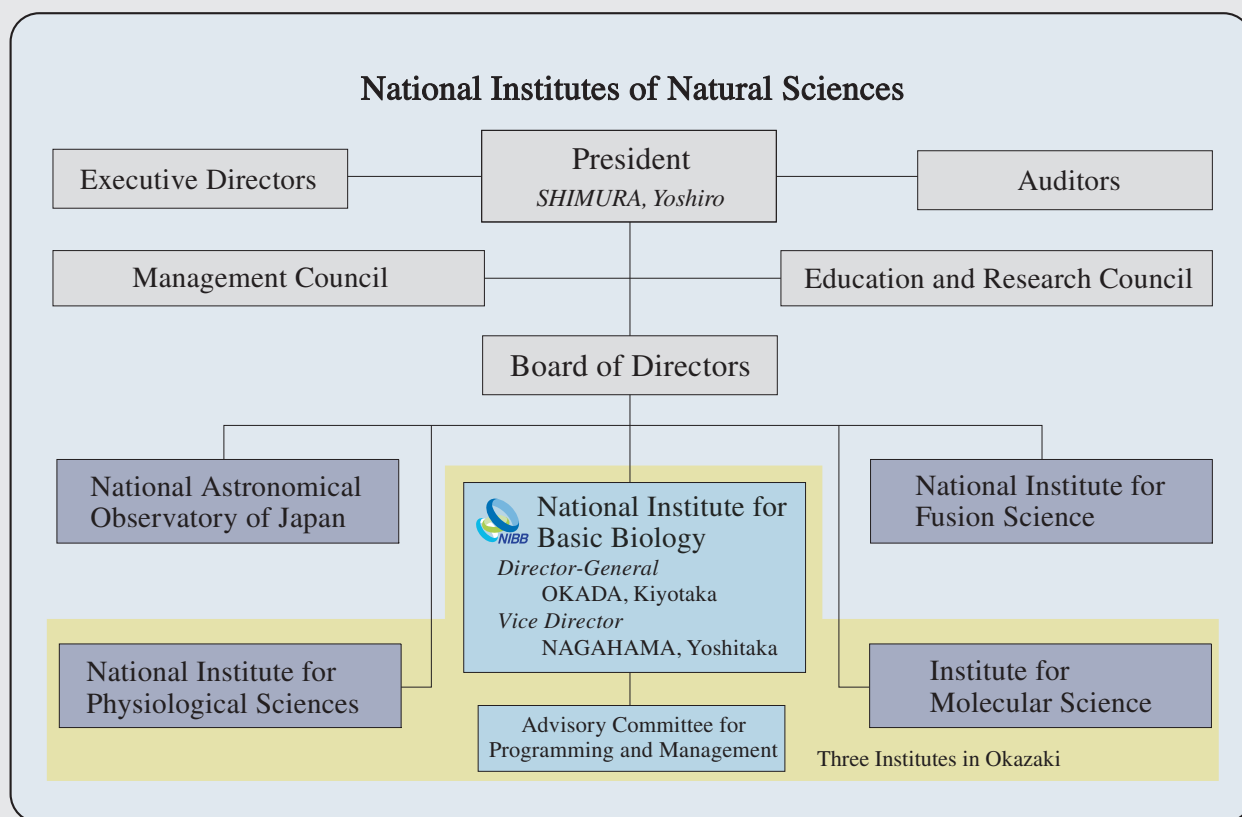


Financial Configuration of the NIBB



The NIBB acquires numerous competitive funds in an effort made by individual researchers, including Grants-in-Aid for Scientific Research and Grants for Commissioned Research, in addition to national subsidies (Management Expenses Grants and Expenses Grants for SOKENDAI).

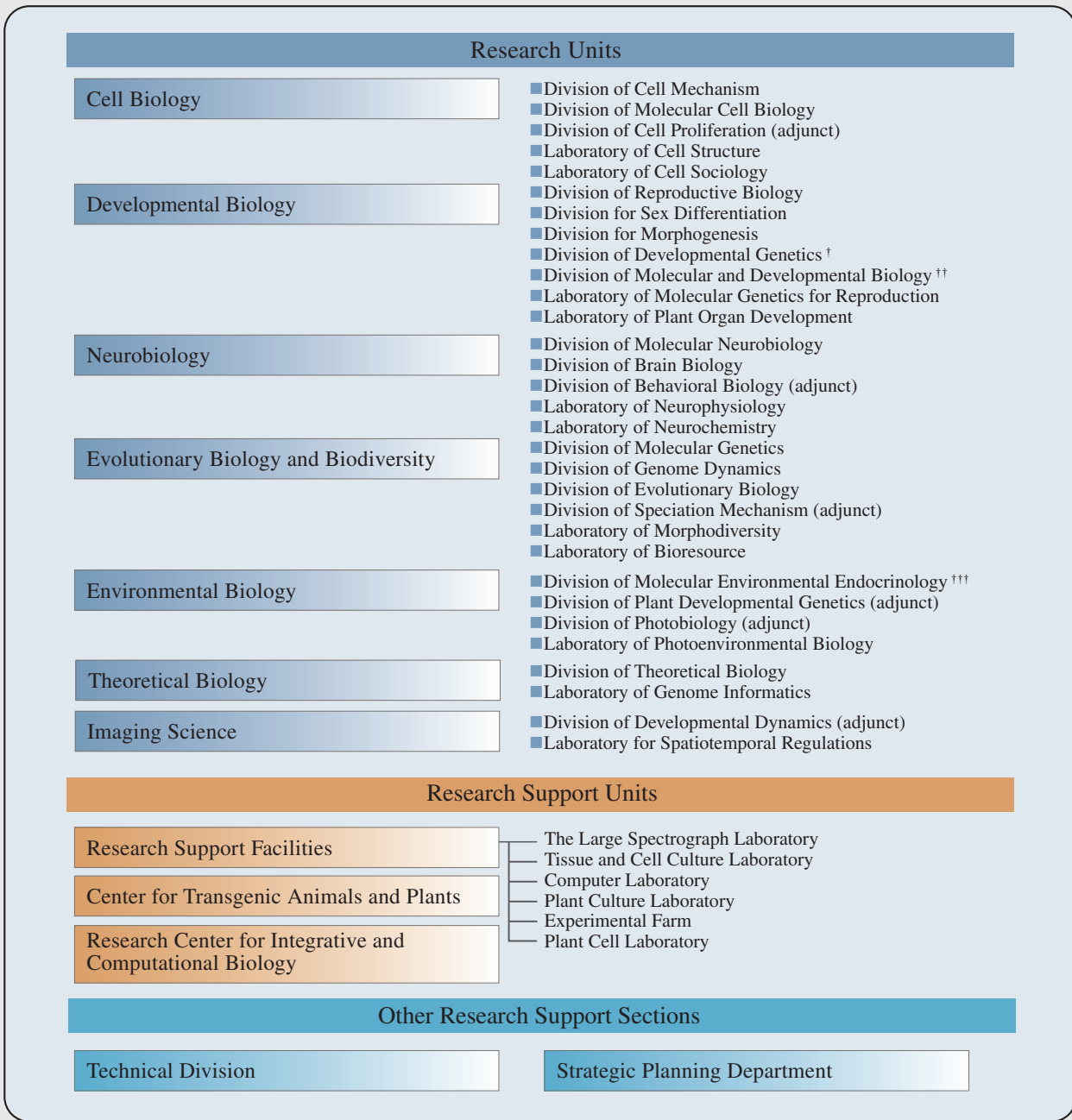
■ Organization



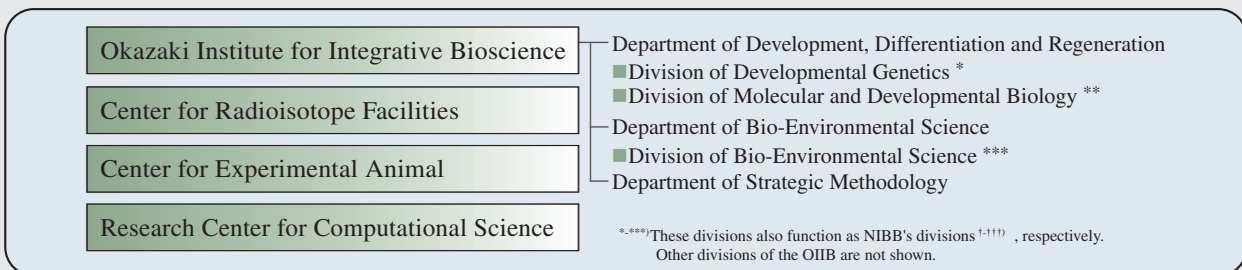
■ Members of the Advisory Committee for Programming and Management

Chairperson	OHSUMI, Yoshinori	Professor, National Institute for Basic Biology
Vice-Chair	IWASA, Yoh	Professor, Kyushu University
Extra NIBB member	HASEGAWA, Mariko	Professor, The Graduate University for Advanced Studies (SOKENDAI)
	ISHINO, Fumitoshi	Professor, Tokyo Medical and Dental University
	KATO, Kazuto	Associate Professor, Kyoto University
	MATSUOKA, Makoto	Professor, Nagoya University
	OSUMI, Noriko	Professor, Tohoku University
	SAKANO, Hitoshi	Professor, The University of Tokyo
	SATOH, Noriyuki	Professor, Kyoto University
	TABATA, Satoshi	Deputy Director, Kazusa DNA Research Institute
NIBB member	HASEBE, Mitsuyasu	Professor, National Institute for Basic Biology
	HORIUCHI, Takashi	Professor, National Institute for Basic Biology
	IGUCHI, Taisen	Professor, Okazaki Institute for Integrative Bioscience
	IIDA, Shigeru	Professor, National Institute for Basic Biology
	NAGAHAMA, Yoshitaka	Vice Director & Professor, National Institute for Basic Biology
	NISHIMURA, Mikio	Professor, National Institute for Basic Biology
	NODA, Masaharu	Professor, National Institute for Basic Biology
	TAKADA, Shinji	Professor, Okazaki Institute for Integrative Bioscience
	UENO, Naoto	Professor, National Institute for Basic Biology
	YAMAMORI, Tetsuo	Professor, National Institute for Basic Biology

National Institute for Basic Biology



Okazaki Research Facilities



Research Facilities run jointly with National Institute for Physiological Sciences

